



www.visitflanders.co.uk

Discover the Cities of Flanders



**Things
to do**



**Places
to visit**



www.eurotunnel.com



Simple, fast and frequent – cross the Channel in 35 minutes

	Distance in km/miles	Estimated driving time
Ypres	95km/60m	1h15
Bruges	120km/70m	1h30
Ghent	155km/93m	1h45
Antwerp	210km/127m	2h15
Brussels	220km/130m	2h15
Mechelen	240km/135m	2h20
Leuven	250km/144m	2h30



Introducing the Cities of Flanders

To make your Eurotunnel reservation book online



www.eurotunnel.com

or
call **08705 35 35 35** for cars
or **08702 43 04 01** for coaches

Any and all of the Historic Cities of Flanders are ideal destinations for UK visitors – the fine restaurants, lively bars and cafés, many excellent museums and attractions, beautiful architecture, rich cultural heritage, and the famous Belgian beers and chocolate, leave visitors spoilt for choice. With all this to enjoy, alongside the legendary hospitality, it's no surprise that so many visitors return to Flanders again and again.

Whether you're passionate about great food, excellent beer and lively nightlife, or art treasures, architecture and history, you'll find everything you want and more in these treasured cities.



Practical information for travellers 4 - 6

Practical information for shoppers 7 - 8

Flanders' charismatic coastline 9

Ypres 10 - 13

Bruges 14 - 19

Ghent 20 - 23

Antwerp 24 - 29

Brussels 30 - 35

Mechelen 36 - 39

Leuven 40 - 43

Calendar of events 2003/2004 44 - 47



Antwerp Town Hall

Practical information for travellers

Language matters

English is widely spoken and understood throughout Flanders. However, if you do experience difficulties, please contact the local tourist office, staff there will be happy to assist you. Dutch is the language in the Flanders region, and Brussels is bi-lingual with both Dutch and French spoken.

Please note that in Brussels, street signs and road signs are in both Dutch and French.

Belgian time

Belgium is one hour ahead of UK time throughout the year. Belgian summer time starts on the last Sunday in March at 2am and ends on the last Sunday in October at 3am.

Telephoning

Belgian phone numbers all have 9 digits.

Calling Belgium

When telephoning from the United Kingdom, the code for Belgium is 00 32. This is followed by the telephone number minus the first 0.

Calling the UK

Dial 00 44 and then your number without the 0 before the area code. The same applies to mobile phones, although it is advisable to check that you have international access before leaving the UK.

Calling from a phone box in Belgium – Phone cards can be bought at post offices and newsagents. The costs are around €3 for 50 units and around €15 for 120 units. Most phone boxes also accept cash and Visa cards. Instructions are generally included in English.

Emergency telephone numbers whilst in Belgium:

Fire	100
Police	101
Ambulance	100
English Operator Assistance	1405

To make reverse charge calls in Belgian telephone booths to the UK: 0800 10044

British Consulate: 185 Rue d'Arlon, 1040 Brussels (00 32) (0)2 287 6211

Postage

Stamps are available from post offices and newsagents. Prices for stamps to the UK are:

€0.52 (0-50g)

€1.09 (51-100g)

Letters/parcels posted from Belgium to the UK take about 3 to 4 days to be delivered, (provided an airmail sticker has been attached).

Additional postal information is also available via the Belgian Post Office 'official' website www.depost.be (Click EN for the English version).

Electricity

The voltage in Belgium is 220v so all UK appliances should function without a problem. You will need a two-pin adaptor that can be obtained from all good electrical stores, or can be purchased at the Folkestone Passenger Terminal Building before boarding the shuttle.

Motoring Rules

Motoring information

Each year, more and more people realise that driving on the other side of the road is not as daunting as it first seems. The golden rules are simply to take more time and be more vigilant.

A big advantage of leaving the shuttle at Calais/Coquelles is that you can drive straight onto the clearly signposted motorway network, which makes acclimatisation so much easier and gets you well on your way to your destination.

There are however a few simple rules to observe:

To drive a car or a motor-cycle in Flanders, the driver must be at least 18 years old, and 16 to drive a moped. At junctions, trams always have priority and cars coming from the right have priority unless shown otherwise. Be warned that another car flashing their headlights is a signal to get out of the way, not a friendly gesture! Diesel, leaded (super) and unleaded (loodvrij) petrol are all readily available at petrol stations.

Before you go

Check that you have the following documents with you, that they are valid and up to date:

- **Valid, full driving licence**
- **Valid insurance policy** covering travel abroad. It is advisable to check this with your insurance company before departure.
- **Vehicle Registration Document**

Compulsory items of equipment

If you are not able to ensure you have all these items before you travel, they can all be purchased at the Folkestone Passenger Terminal Building.

- **GB Sticker**
- **Spare Bulb Kit**
- **Warning Triangle**, to be placed 50-150 yards behind your vehicle in case of break-down or accident. Hazard warning lights alone are not sufficient.
- **First Aid Kit**
- **Fire Extinguisher**

Failure to comply with the above could result in a prosecution or an 'On the Spot' fine.

'On the Spot' fines

For certain offences, you can be asked to pay in cash immediately. Credit cards or travellers-cheques are not acceptable - and an inability to pay in cash risks impounding the driver's vehicle until the fine is paid. Offences for spot fines include speeding and crossing a solid white 'stop' sign without stopping (you are required to stop for at least 3 seconds at a stop sign).

Speed limits (Unless otherwise indicated)

	mph	km/h
Motorways	75	120
Minimum speed on motorways	45	70
Dual carriageways	56	90
Outside built-up areas	56	90
In towns/built-up areas*	31	50

*The beginning of a town is marked by a white board with the town name; a bar through the town name marks the end of the town.

Seat Belts

For all passengers seatbelts are compulsory. Children under 12 years of age must sit in the rear of the vehicle.

Drinking and Driving

The blood alcohol limit is 0.5 g/litre in Belgium. This is lower than in the UK where the limit is 0.8g/litre. Random breath tests are frequent.

'Priority to the right'.

The priority rule is the main difference in general driving rules between Belgium and the UK. Whilst major junctions and roundabouts now follow the UK system, the 'priority to the right' principle still exists inside most towns. The yellow lozenge signpost shows that traffic on the main road has priority over traffic joining from a side-road on the right.

However, on entering towns, this same sign but with a line through it often appears, meaning that any vehicle pulling out in front from the right will usually have priority. In the absence of any markings on the road, priority must be given to the car coming from the right-hand side.

Motorways

The Belgian motorways are excellent, well lit, clearly signposted and toll free! The E40 motorway is a fast and simple route to follow from Calais/Coquelles to Flanders, and to access Brussels. Emergency telephones linked to a central help desk are located at regular intervals along motorways.



Boarding the shuttle

Public holidays in Belgium

Dates which are annual are given in italics.

2003	Holiday	2004
<i>1 January</i>	<i>New Year's Day</i>	<i>1 January</i>
20 April	Easter Monday	12 April
<i>1 May</i>	<i>Labour Day</i>	<i>1 May</i>
29 May	Ascension Day	20 May
8 June	Whitsunday	30 May
9 June	Whitmonday	31 May
<i>11 July</i>	<i>Holiday of the Dutch speaking community</i>	<i>11 July</i>
<i>21 July</i>	<i>National Bank Holiday</i>	<i>21 July</i>
<i>15 August</i>	<i>Assumption Day</i>	<i>15 August</i>
<i>1 November</i>	<i>All Saints' Day</i>	<i>1 November</i>
<i>11 November</i>	<i>Armistice Day</i>	<i>11 November</i>
<i>25 December</i>	<i>Christmas Day</i>	<i>25 December</i>
<i>26 December</i>	<i>Boxing Day</i>	<i>26 December</i>

School holidays in Belgium

2003	Holiday	2004
3-9 March	Spring	23-29 February
7-20 April	Easter	5-18 April
29-30 May	Ascension	20-21 May
1 July-31 August	Summer	1 July-31 August
27 October-	Autumn	1-7 November
2 November		
22 December-	Christmas	27 December-
4 January		9 January

NB: According to information available at time of print.

Where to eat and stay

Restaurants

Only some of the hotels featured in this guide have dining restaurants, but a selection of very good restaurants referred by local tourist offices in each city is also included. These restaurants are diamond (♦) rated (3 highest and 1 lowest) according to consideration of the following factors: friendliness, décor, location, quality of food and value for money. Prices mentioned are based on set menus, usually of 3 courses, per person for an evening meal excluding beverages.

Practical information for travellers

There are, of course, many more good quality eating establishments in Flanders, and any local tourist office will be pleased to give you a more complete list.

Hotels

Hotels featured in this guide have been selected by Toerisme Vlaanderen in Brussels and have an official BENELUX star rating, issued by the local authorities. Prices are in Euros (€) and are per room, including breakfast. For single rooms or single use of a double/twin room a 'single supplement' may be charged.

Hotel offers

For each city, a number of hotels have provided special offers unique to Eurotunnel customers. To make a booking call the hotel direct, referring to Eurotunnel's 'Cities of Flanders' guide. Eurotunnel and Tourism Flanders-Brussels are NOT tour operators or travel agents and are not involved with bookings, terms and conditions of payment or any other matter related to the booking.

Terms and conditions

All hotel offers valid until 31 December 2003.

'Children stay for free' and 'children stay at half price' means that one or two children (depending on age, up to 2, 12 or 17 years - check hotel listing) stay free of charge or at half price, including breakfast, when sharing a room with two paying adults (unless specified otherwise).

'3rd night free' means that the hotel offers a third night free including breakfast when 2 nights are booked during the stated periods. Please note conditions specific to each hotel are applicable and are available from the individual hotel.

'No single supplement' means that for single rooms or use of a double/twin room, a 'single supplement' which is normally charged in all hotels will not apply at the participating hotel offering this benefit.

Full Terms and Conditions of booking for all hotels featured in this guide are applicable and are available from the individual hotel.

Eurotunnel and Tourism Flanders-Brussels are not Tour Operators and cannot be held responsible for any problems that may occur as a result of a reservation made with one of the featured hotels. Any queries or complaints arising from a stay in one of the featured hotels should be made known to the said hotel as soon as the problem occurs.

Campsites

Fire safety, first aid, hygiene and classification standards are all covered within Flanders' campsites by the Flemish government's Camping Sites Act of 1 January 2000 which states that all advertised campsites must adhere to strict guidelines in all of these areas.

If you would like to know more about self-catering

holidays in Flanders (text available in English), log on to www.camping.be. Or you can always contact Tourism Flanders-Brussels at the address given on p.8 of this guide.

Regional cuisine

Those who so far haven't been lucky enough to experience Flanders' cuisine are in for a wonderful surprise.

Well worth sampling are **crevettes**, small grey shrimps prized for their full flavour, and a variety of other seafood, including **mussels**, which can be found cooked in everything from garlic and cream to rich tomato-based sauces. The perfect accompaniment to mussels, even the humble **chip** is transformed in Flanders – cooked twice for an extra-special crisp bite and served with creamy mayonnaise.

Other regional specialities are **waterzooi**, a creamy fish or chicken stew; **Flemish sausages** served with **stoemp** (potatoes mashed with seasonal vegetables); **Carbonades Flamandes** (a hearty dish of beef cooked in beer); and **'gold man's fingers'** (delicately flavoured white asparagus served with a white sauce).

For those who just can't say no to dessert, **waffles** (gaufres is the French spelling) topped with cream, fruit, ice cream, chocolate or icing sugar are deliciously decadent, while biscuit fans will enjoy **speculoos** (ginger spiced biscuits that melt in the mouth).



Regional dishes

Shopping Information

Banks

Open 9am-noon and 2pm-4pm or 5pm Monday to Friday, and closed over the weekend. Banks in larger towns do not generally close for lunch.

Post offices

Open 9am-5pm Monday to Friday; 9am-noon on Saturday. Closed on Sundays.

Shops

Open 10am-6pm Monday to Saturday. Department stores stay open on Fridays until 8pm or 9pm. In provincial towns, shops may close between noon and 2pm.

In certain areas and during the tourist season, some shops open on Sunday from 10am-4pm. It is advisable to check with the local tourist office for full details.

Museums

The majority of museums open on Sunday, however, they may close on Mondays in Brussels and Antwerp. In Bruges, museums may close on Tuesdays or Wednesdays. It is advisable to consult individual city brochures prior to your visit to check local opening times as they vary from city to city.

Money matters

Currency

The currency in Belgium is the Euro (€). The Euro is issued in notes of €5, €10, €20, €50, €100, €200 and €500, with coins of €1 and €2. The Euro is divided into 100 Euro Cents, issued in coins of 1, 2, 5, 10, 20 and 50.

The exchange rate between the pound and euro fluctuates, but as a guideline, the average exchange rate at time of going to press was as follows:

€1 = £0.68

£1 = €1.48

Check with your bank for the current conversion rate before you travel. Currency can be changed in banks and there are also money exchange offices at airports, railway stations and located on main shopping streets in the cities. Money can also be changed at larger hotels.

Payment, cash and credit cards

- Before travelling, it is advisable to change some money into Euros for small purchases and to pay for parking and shopping trolleys.
- All major credit cards are widely accepted in shops, hotels and restaurants, petrol stations and supermarkets, although smaller shops, cafés and bars in provincial towns may accept cash only.
- Using credit/debit cards and UK pin numbers, cash can be withdrawn from numerous cash dispensing machines in Belgium bearing the appropriate symbol.
- Cardholders should always travel with their banks' 24 hour UK contact number.



Belgian beer

Best buys

The hypermarkets and specialist shops in Flanders offer good value for money for many items, including Belgian beers, cheeses, chocolate, wines and spirits. There are also many other items worth taking home, such as diamonds, clothing, lace and fine tapestries.

Beers

There are over 600 Belgian beers to choose from, and each comes with a specially designed glass to make the drinking experience even more pleasurable. Almost every town in Flanders has a local brew, ranging from dark, malty beers to the light, refreshing 'blondes' and a wide choice of fruit flavoured beers - mounting a formidable challenge for even the most ardent connoisseur! A number of breweries offer tours to visitors, with the obligatory sampling of their wares afterwards - an excellent way to spend an afternoon.

Hypermarkets, supermarkets and specialist shops offer a good selection for those who wish to take home a reminder of Flanders.

Spirits

Jenever is a strong spirit, similar to gin, but designed to be savoured and to be drunk neat rather than with mixers. The drink is available in many flavours, from bitter herb tasting ones, various sweet and fruity flavours to nutty ones including a walnut flavour. Take it easy, though - some varieties of jenever are over 50% proof!

Flanders used to have many distilleries producing jenever - one in almost every village, town and city - but these have now diminished. However, visitors can still sample this special drink as it is widely available in bars across Flanders, and many specialist shops stock a range - each brand has its own distinctive bottle, often made from heavy stoneware or coloured glass.

Lovania, a locally produced liqueur in Leuven and **Elixir D'Anvers** produced in Antwerp are two other spirits well worth sampling during a visit to one of the many cafés and bars in Flanders.

Practical information for shoppers



Regional cheeses

Cheeses

With over 300 varieties of cheese, Belgium is also proud of its national heritage as a cheese making country. Flanders produces many excellent local cheeses, which vary in texture, flavour and pungency. Fans of hard cheese may enjoy **Oud Bruxelles**, **Oud Brugge**, **Passendaele** or **Rubens**. **Fromage de Bruxelles** is a good medium cheese, while **Platte kaas** is a cream cheese usually eaten with wholemeal bread and accompanied with radishes or spring onions. Cheese is also a good compliment to Belgian beer.

Chocolate

Who isn't aware that Belgian chocolate is the finest in the world? Using only the best quality ingredients and often made by hand, delicious chocolates can be found right across Flanders. The biggest brands are **Godiva**, **Neuhaus** and **Leonidas**, which have outlets in all the cities. There are also many small family-owned chocolatiers that are well worth a visit. Totally irresistible!

Tapestries

Flanders was renowned during the 16th and 17th centuries for the quality and craftsmanship of its tapestries – the finest examples of which decorated royal palaces and important churches and cathedrals all across Europe. There are many specialist shops, particularly in **Mechelen** and **Bruges**, where tapestry work can be bought for reasonable prices.

Lace

Making lace by hand is a laborious process but the results are well worth it and are far superior to factory made versions. There are many shops in the main cities, particularly in **Bruges**, where visitors can buy delicate lace creations.

Comics/cartoon memorabilia

Brussels is the home of the comic strip and of Hergé's famous creation, '**Tin Tin**'. Walking around Brussels, you'll be occasionally surprised by colourful cartoon murals on the sides of buildings, and for children of all ages, the **Brussels Comic Strip Centre** is not to be missed. The Tourist Office in Brussels (TIB) offers special cartoon themed walks around the city.

Clothes

Antwerp is the fashion capital of Belgium and home to the renowned Antwerp Fashion Academy. Established designers, such as Ann Demeulemeester, rub shoulders with up-and-coming names. For beautiful leather goods to last a lifetime, look no further than **Delvaux**, which also has shops in Antwerp and Brussels.

Diamonds

Antwerp is the diamond-trading centre of the world and the 'Antwerp Cut' is synonymous with quality for diamonds and other precious gems. For those wishing to purchase a precious stone in Antwerp, look out for the ADJA approved logo on jewellers' windows. Even if you're not looking to buy, the diamond district is fascinating just to watch the weekday hustle and bustle as the diamond traders rush from deal to deal.

For further information about what to see and do in Flanders, please contact Tourism Flanders-Brussels at the address below:

Tourism Flanders-Brussels

31 Pepper Street, London E14 9RW
Tel: 020 7867 0311 Fax: 020 7458 0045
E-mail: office@visitflanders.co.uk
www.visitflanders.co.uk



Flemish Lace

Flanders' charismatic coastline

Flanders' charismatic coastline

The golden sandy beaches of Flanders' coastline are dotted with lively and vibrant resorts and boast miles of unspoilt nature reserves.

In just half an hour's drive from the Eurotunnel terminal at Calais/Coquelles, a friendly Flemish welcome awaits you at De Panne, and from there, the N34 hugs the shore, passing by some better known coastal towns and numerous smaller villages and resorts.



Breathtaking coastal views

There is something to suit everyone along the Flemish Coast: long sandy beaches at De Panne and Westende, fishing ports and excellent seafood at Nieuwpoort and Zeebrugge, leisure and sporting activities at Blankenberge and Middelkerke, designer shopping at Knokke-Heist and nightlife at Ostend.... All this and more lie within an easy 67 km drive from one end of the Flemish coastline to the other.



Coastal tramline



Ostend, city by the sea

Ypres Tourist Office
Cloth Hall, 34 Grote Markt
8900 YPRES
Tel: (0)57 22 85 84
Fax: (0)57 22 85 89
E-mail: toerisme@ieper.be
www.ieper.be

From the 13th century Ypres, like its main rivals Bruges and Ghent, was an important cloth trade centre with an international consuming market. It is at this time that the building of the Cloth Hall, Belfry and Cathedral was begun. During the 17th and 18th centuries it was changed by its successive occupiers into a giant fortress, but then progressively the Habsburgers, the French, the Dutch and Belgian government attached less importance to it and Ypres seemed to be in a gentle sleep.

All of this changed in 1914 when for one night Ypres was occupied by the advancing German army but fell under the control of the Allied Forces from 14 October 1914. In the four years following this date the town was continuously shelled by the German artillery and razed to the ground by this constant bombardment. Ypres would take more than 40 years to rebuild and now stands as a symbol of the slaughter and suffering of that time.

Over five million British and Commonwealth soldiers passed through the gates on their way to the carnage of the 'Ypres Salient', and 500,000 died. 170 cemeteries tell of the inhuman tribute that the war required. Ypres is now restored to its former glory, but the memory of the many who fell on the nearby battlefields is kept alive through numerous poignant sites, monuments and remembrance ceremonies.

Shopping

The main shopping streets are Boterstraat and Meninstraat, which offer a variety of modern and traditional stores for everything from clothing to traditional specialities. There is also a Saturday market, which takes place from 8am-noon on the Grote Markt square, selling items such as food and clothes. For souvenirs, postcards and books on the War and the Ypres region, visit the Tourist Information Centre Museum Shop, (34 Grote Markt).

For delicious handmade chocolates, don't miss Calinor (16 Boterstraat), Patisserie Belfort on the market square (6 Rijselstraat), and Patisserie Niville (38 Milk. Frenchlaan) situated just outside the Menin Gate.



The Last Post, every night at 8pm

Places of interest

Menin Gate and The Last Post

The Menin Gate is the most famous Commonwealth War Memorial in Flanders. Designed in classical style by Sir Reginald Blomfield and inaugurated in 1927, the Menin Gate is situated on the site of one of the old town gates and bears the names of the 54,896 soldiers who were reported missing in the Ypres Salient between the outbreak of the War in 1914 and 15 August 1917.

The Last Post is a solemn and evocative remembrance for all the soldiers. Taking place under the Menin Gate at 8pm every evening since 11 November 1929, the buglers of the fire brigade sound their heartfelt song to honour the bravery of the many soldiers who laid down their lives here.

Meninstraat

St George's Memorial Church

Built in 1929 in memory of the soldiers who died in Ypres and again designed by Sir Reginald Blomfield, St George's is built in the style of a traditional English parish church. There is also a small school next to the Church, named Eton College, which was intended for the education of the children of the many British employees of the Commonwealth War Graves Commission. Corner Elverdingestraat - Vandenpeereboomplein

The Rampart Route (De Vestingroute)

First fortified in 1100 by earth walls and wooden gates, the present ramparts date from the 17th century and were designed by the French architect Vauban under the orders of Louis XIV. Collect your free information guide, available in English, from the Ypres Tourist Office and walk the 'Rampart Route' along these old fortification walls. On this 4 km walk there are 12 monuments dating back to the 13th century.

All the gates, towers and historic buildings are described in full in the information guide.



The Cloth Hall

Attractions

In Flanders Fields Museum

The award winning In Flanders Fields Museum is situated in the beautiful Cloth Hall on the main square. The Cloth Hall was originally built in the 13th century and regarded as one of the finest Gothic buildings in Europe. Destroyed early in the Great War, it was rebuilt with a painstaking attention to detail, finally being completed in 1967 as an exact replica of the original.

The Museum re-creates the experience of life during the First World War through a careful selection of personal exhibits, displays, interactive devices and models, which invoke to the visitor the smells and sounds of battlefield as well. In addition, the museum collects stories of people who were in Ypres at the time – those in combat and civilians, from all walks of life. The visitor can be assigned one of these stories as they enter and follow the personal experience as they view the exhibits through the use of interactive CD-rom terminals.

In and around Ypres

Cloth Hall, 34 Grote Markt

Tel: (0)57 22 85 84 Fax: (0)57 22 85 89

Open: 1 April to 30 September, 10am-6pm (daily);

1 October to 30 March 10am-5pm (everyday except Monday).

Closed: 25 December, 1 January and the first 3 weeks after the Belgian Christmas holidays.

Admission: Adult €7.50, Child €3.50, Family €18.50.

Places of interest around Ypres

The Yorkshire Trench and Dugout

Open for the first time to the public on 31 May

2003, the Yorkshire Trench and Dugout was rediscovered by accident in 1992 on a new industrial estate about 4km north of Ypres.

British soldiers began the trench in 1915 during fighting that followed the first gas attacks, and was completed in the Spring of 1917 with the addition of a deep dugout. A 70m stretch of the trench has been restored while a groundplan of the underground dugout and original trench is outlined above ground. Although the trench is now situated in an industrial site, informative panels and new plantings allow visitors to gain insight into a unique piece of trench warfare.

Once of the main goals of the site is educational: to provide information about the area during WW1, the construction of trenches and dugouts and the recovery of the bodies of 160 soldiers. Bargiestraat, 8900 Ypres

Tel: (0)57 22 85 84 Fax: (0)57 22 85 89

Open: All year round (from 31 May 2003)

Admission: Free

Tyne Cot Memorial and Cemetery Passendale

Situated on the western slopes of the Passendale Ridge, from which open countryside stretches as far as the English Channel, Tyne Cot is an impressive memorial. It represents the most desperate offensive fighting by the Commonwealth armies in Belgium, as the soldiers experienced their most stubborn enemy resistance at Ypres. This is the last resting place of nearly 12,000 Commonwealth soldiers, the largest number of burials in any Commonwealth cemetery in either World War. Unnamed graves number nearly 8,400 – 70% of the total. Names of around 35,000 missing soldiers appear on the panels of the memorial at the back of the cemetery. The cemetery was named after a barn at the centre of a German strong point of 'blockhouses', called Tyne Cot or 'Tyne Cottage' by men of the Royal Northumberland Fusiliers. The 'blockhouses' still stand in the cemetery.

Free admission

Talbot House, Poperinge (Toc H)

In 1915, army chaplain Philip 'Tubby' Clayton and Neville Talbot opened a clubhouse for soldiers in Talbot House, Poperinge, in memory of Gilbert Talbot (Neville's younger brother), killed at Hooge earlier that year. More than half a million soldiers visited the club for rest and recreation. The chapel on the third floor, referred to as 'upstairs' has been left untouched since 1918.

43 Gasthuisstraat

Tel: (0)57 33 32 28 Fax: (0)57 33 21 86

Open: everyday all year round, 9am-noon and 2pm-5pm

Closed: from the weekend before Christmas until 1 January.

Admission: Adult €3, Child €2, Family €10.

Private War Museums

Hill 60, Queen Victoria Rifles Museum

A range of war relics, from photographs and slides to rifles and bayonets, are on display in the museum, while the bleak landscape of Hill 60, unchanged since 1918, tells the story of the massive mine detonations which took place here.

40 Zwarteleenstraat, Zillebeke

Tel: (0)57 20 62 76

Open: everyday all year round, 10am-6pm.

Admission: Adult €1.25, Child €1.

Hill 62, Sanctuary Wood Museum

Located in a small section of the wood, this stretch of trenches are amongst the only truly authentic ones left in the area and have been preserved in their original state as they were found at the end of the War. There is also a small museum that charts the experience of the soldiers who fought here.

26 Canadalaan, Zillebeke

Tel: (0)57 46 63 73

Open: everyday all year round, 10am-6pm.

Admission: Adult €5, Child €2.50.



Tyne Cot Cemetery

Hooge Crater Museum

This museum exhibits pictures, as well as weapons, objects and equipment used during the War. There are also reconstructions of war scenes, using full sized models of horses and soldiers in the uniforms of the different nations involved.

467 Meenseweg

Tel: (0)57 46 84 46 Fax: (0)57 46 87 12

Open: everyday except Mondays, 1 February to 15 December, 10am-6pm.

Closed: 16 December to 31 January.

Admission: Adult €3, Child €1.50.

In Flanders Fields Car Route

A number of 'planned' car routes are available to help you explore the region. The 'In Flanders Fields' route (82 km) begins and ends in Ypres. This enables you to become acquainted with the most important cemeteries and monuments in the area: it also offers a good introduction to the local countryside. Map and guide available at the Ypres Tourist Office. Price: €2.48.

Where to eat and stay

The following is a list of some of the restaurants and hotels in Ypres. There are, of course, many more good quality establishments in this city, the local tourist office will be pleased to give you a more complete list.

Restaurants in Ypres

Hostellerie St Nicolas ♦♦♦

One of the top restaurants of Ypres, the beautiful interior and excellent service are only outshone by the superb gastronomic dishes.

3 course menu from €35

532 Veurnseweg

Tel: (0)57 20 06 22 Fax: (0)57 46 98 99

Restaurant Den Anker ♦♦

An extensive menu of mussels, fish and 'côte à l'os' specials and the friendly service make this one of the most popular restaurants in the area.

3 course menu from €20

30 Grote Markt

Tel: (0)57 20 12 72

Old Tom ♦♦

A hotel-restaurant which has been run by its friendly owners for the past 25 years, Old Tom's menu emphasises use of local market produce and regional cuisine.

3 course menu from €25

8 Grote Markt

Tel: (0)57 20 15 41 Fax: (0)57 21 91 20



Gabled building

Pubs and clubs

The Walker

A traditional pub with a British style interior.
6 Menenstraat

The Times

Enjoy the easy going atmosphere and excellent service in this stylish modern bar.
7 Korte Torhoutstraat

Hotels in Ypres

Please refer to terms & conditions on page 6.

Kasteelhof 't Hooghe ***

This quietly located hotel is situated at 3 km from the centre of Ypres, near the Bellewaerde theme park. Luxury rooms in English cottage style.

11 rooms. From €64 to €70 per room.

Menus from €14 to €35.

481 Meenseweg, 8902 YPRES

Tel: (0)57 46 87 87 Fax: (0)57 46 87 58

*children up to 2 years stay free
children up to 12 years stay at half price*

Hotel Amfora ***

Hotel Amfora is a neo-gothic style hotel centrally located in Poperinge, only 8 km from Ypres.

Rooms are modern and comfortable and have air-conditioning, phone with ISDN and mini-bar.

7 rooms. From €73 per room.

Menus from €8.75 to €48.

36 Grote Markt, 8970 POPERINGE

Tel: (0)57 33 88 66 Fax: (0)57 33 88 77

3rd night free, no single supplement

Bruges Tourist Office
11, Burg Square
8000 BRUGES

Tel: (0)50 44 86 86 Fax: (0)50 44 86 00

E-mail: toerisme@brugge.be
www.brugge.be

Steeped in history, this 'Venice of the North' is a true romantic retreat from the hustle and bustle of the 21st century. The medieval buildings, museums, enchanting cobbled streets and network of canals offer visitors plenty with which to occupy their time.

Established as the capital of Flanders in the 11th century, Bruges became one of the richest cities in Europe by the 13th century, being a world trade centre and boasting Europe's first stock exchange. However, by the end of the fifteenth century it all started to go horribly wrong – after the riots of Maximilian of Austria and the silting up of the river Zwin many merchants went to Antwerp where they could receive more privileges. Bruges therefore became inaccessible to the many ships bringing wares from all over the world and the city's fortune declined.

Bruges' 15th and 16th century decline effectively contributes to its charm today. This pocket-sized city, with a population of only 116,000, remains rooted in the past, seemingly impervious to the momentous changes of the past century - with not a sky scraper or monstrous factory development to be seen.

Shopping

There are many shops in Bruges, ranging from small exclusive boutiques to high street brands. There is also a wide range of shops selling lace, tapestries, chocolates and confectionary, beer and general souvenirs. The main shopping streets are to be found between the Markt square and the old city gates, while there are dedicated shopping galleries on Zuidzandstraat, Wollestraat and Burg Square, Simon Stevinplein and Hallestraat.

Essential stop-offs are Teddy en Co (27b Katelijnestraat) for high quality toy bears, Suikerbuyc (5 Katelynestraat) for chocolates and Dille en Kamille (17-18 S. Stevinplein) for kitchenware and knick-knacks. For antiques, bric-a-brac and gourmet confectionary visit the flea market near the picturesque Dijver canal, every

Saturday and Sunday afternoon from March to October. Also a giant flea market is held three times a year, on 7 July, 4 August and 29 September 2002 on Koning Albertpark and t'Zand.

Discover the city by boat or carriage

Discover Bruges during a roundtrip on the picturesque canals. Tours run daily from 10am-6pm from March until November and on weekends, holiday periods and bank holidays during the winter months of December to February.

Alternatively take a romantic and individual tour of the medieval city by horse-drawn carriage. A 30-minute journey will take in the most interesting museums and historical sights of Bruges and it is even possible to take an illuminated late-night trip during the finer months of July and August. Daily departures leave from Markt Square.

Places of interest

The Belfry

Boasting a fine carillon, the sounds of which echo through the cobbled streets, the Belfry is one of Bruges' most impressive buildings. Those brave enough to climb the 366 steps are rewarded with a superb view of the city and surrounding countryside.

7 Markt

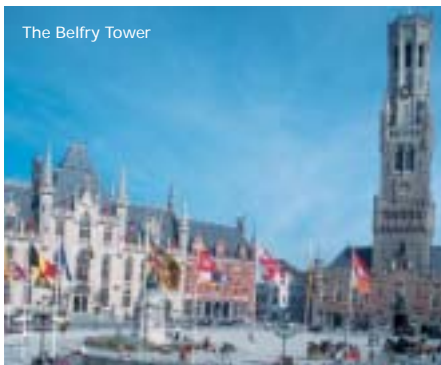
Tel: (0)50 44 87 67

Basilica of the Holy Blood

An unusual double chapel, the upper decorated with intricate wall paintings, was converted in the 19th century and guards the Treasured Relic of the Holy Blood. St Basil's, the Roman-style lower chapel, dates from 1139.

13 Burg

Tel: (0)50 33 67 92



The Belfry Tower



Map References

Attractions

- 1 The Belfry
- 2 Basilica of the Holy Blood
- 3 Church of Our Lady
- 4 Begijnhof / Minnewater
- 5 Lace Centre
- 6 St John's Hospital and Memling Museum
- 7 Straffe Hendrik Brewery
- 8 Diamond House

Hotels

- 1 De Medici Hotel
- 2 Flanders Hotel
- 3 Hans Memling Hotel
- 4 Hansa Hotel
- 5 Jan Brito
- 6 Relais Oud Huis Amsterdam
- 7 Romantik Pandhotel
- 8 Walburg Hotel
- 9 Botaniek
- 10 Boudewijn I Hotel
- 11 Ibis Brugge Centrum
- 12 Malleberg
- 13 Olympia
- 14 Pannenhuis Hostellerie
- 15 Cavalier



Car Parking



Bus/Coach Parking

Church of Our Lady

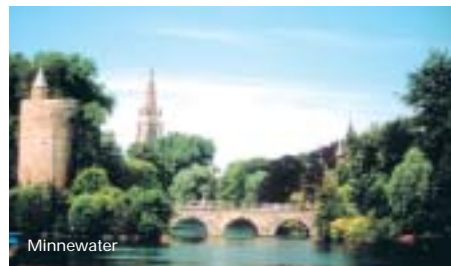
This beautiful 13th century church contains a rich art collection, including Michelangelo's Madonna with Child. The 122 metre-high tower is one of the city's most notable landmarks.

Katelijnestraat

Tel: (0)50 34 53 14

Begijnhof & Minnewater

Founded in 1245 as a haven for the beguines (secular women who devoted their lives to charitable work) and now occupied by Benedictine nuns, this beautiful retreat offers visitors a fascinating glimpse of the past. Situated by the gates of the Beguinage, Minnewater, also known as the 'Lake of Love', is home to a number of swans - the perfect place to rest and enjoy the unique atmosphere. Wijngaardstraat
Tel: (0)50 33 00 11



Minnewater

In and around Bruges

Attractions

The Lace Centre

Both a museum and a workshop situated in charming old almshouses, visitors can watch the lace-makers at work, examine ancient examples of skilled lace work and buy souvenirs.

16 Balstraat

Tel: (0)50 33 00 72 Fax: (0)50 33 04 17

Open: everyday except Sundays and public holidays; 1 April to 30 September, 10am-noon and 2pm-6pm; Saturdays, 10am-noon and 2pm-5pm. Afternoon demonstrations.

Admission: Adult €1.50.

St John's Hospital and the Memling Museum

One of Europe's oldest medieval hospitals, the former wards reconstruct hospital life by means of an impressive collection of artwork and furniture, whilst the adjacent hospital church houses Hans Memling's most noted masterpieces.

38 Mariastraat

Tel: (0)50 44 87 71

Open: everyday except Mondays; 1 April to 30 September, 9.30am-5pm; 1 October to 31 March, 9.30am-5pm. Open Easter Monday and Whit Monday. Closed: 1 January, Assension Day and 25 December.

Admission: Adult €7.

Straffe Hendrik Brewery

First recorded in 1546, this small picturesque brewery offers guided tours and the chance to sit and relax with the delicious Straffe Hendrik brew in the tap-room afterwards.

26 Walplein

Tel: (0)50 33 26 97 Fax: (0)50 34 59 35

Open: 1 April to 30 September, 11am-4pm; 1 October to 31 March, 11pm-3pm.

Admission: Adult €3.70 (one drink included).

Diamond House/ Diamond Museum

Provides the visitor with an extraordinary view into the history and background of the diamond industry in Bruges and Belgium, as well as providing a general knowledge into the world of diamonds with daily diamond polishing demonstrations.

Museum: Ankerplaats

Showroom 1: 5 Cordeaniersstraat

Showroom 2: 43 Katelijnestraat

Tel: (0)50 34 41 60 Fax: (0)50 34 50 61

Open: everyday; 10.30am-5.30pm.

Admission: Adult €5, Child €2.50, Families €12.

Diamond cutting demonstrations daily at 12.15pm - €2.50 extra.



Lace-making

Places of interest around Bruges

Dolphinarium Boudewijnpark

Europe's first and most sophisticated Dolphinarium, Boudewijnpark is situated just 3 km from Bruges with over 25 attractions and splashing shows to amuse all ages.

12 De Baeckerstraat

8200 Bruges

Tel: (0)50 40 84 04 Fax: (0)50 40 84 24

Open: Easter holidays and every weekend in April, 11am-5pm; 1 May to 30 June, 10.30am-5pm (Sundays & public holidays until 6pm); 1 July to 31 August, 10am-6pm; 1 to 30 September, 10.30am-5pm (Wednesday, Saturday and Sunday until 6pm).

Closed: 1 October to 31 March (except Easter holidays).

Admission: All-in ticket, Adult €16 Child €16.

Lissewege

This peaceful and picturesque suburb of Bruges is one of the best-preserved and prettiest rural communities on the Flemish coastal plain.

Whitewashed houses line the banks of a canal that runs through the centre of the village and meadows and fields are in abundance making it an ideal place for cycling or relaxing walks. Visit the Chapel, Church of Our Lady or Ter Doest, a former 12th century Cistercian abbey.

Zeebrugge

Linked with Bruges by a 7½ mile canal, Zeebrugge is both a seaside resort and an international port. It has an attractive marina and is Belgium's leading fishing port. A roundtrip aboard the "Euro-line" vessel allows you to discover the port of Zeebrugge by sea. Departures leave from the old fishing port alongside the old fish market and are 1 hour 15 minutes in duration.



Bruges Canal

Seafront Maritime Theme Park

Here you can discover everything you wanted to know about the sea. Experience the living conditions of the crew on a former Russian Foxtrot-submarine or on the 'Westhinder' lightship and let yourself be carried away with the mysterious myths and legends of the deep.

12 Vismijnstraat

8380 Zeebrugge

Tel: (0)50 55 14 15 Fax: (0)50 55 04 13

Open: everyday: 10am-6pm, (July and August until 7pm).

Admission: Adult €9.95, Child (<12yrs) €7.50, Child (up to 1.2 m) free if accompanied by parent.

Damme

This charming village beside the romantic Damme canal is renowned for being Flanders' first book town, Belgium's equivalent to the UK town of Hay-on-Wye with every second Sunday of the month holding a book market on the market square. Being so flat, Damme also lends itself as a popular tourist cycling route, easily toured from Bruges. Its other attractions include windmills, the Literary museum and the St John's Hospital.

Where to eat and stay

The following is a list of some of the restaurants and hotels in Bruges. There are, of course, many more good quality establishments in this city, the local tourist office will be pleased to give you a more complete list.

Restaurants in Bruges

De Snippe ♦♦♦

For a truly gourmet feast, try the fish or game dishes, all specialities at this superb restaurant.

Menus from €66

53 Nieuwe Gentweg

Tel: (0)50 33 70 70 Fax: (0)50 33 76 62

Den Dwyer ♦♦♦

Savour the wide range of beer based dishes in this pretty restaurant overlooking the canal.

Menus from €42

5 Dijver

Tel: (0)50 33 60 69 Fax: (0)50 34 10 64

'T Bezemtje ♦♦

Try lobster and fish specialities in this small cosy rustic restaurant.

Menus from €22.19

Gastronomic menus from €32.10 to €54.41

1 Kleine St Amandstraat

Tel: (0)50 33 91 68 Fax: (0)50 33 04 98

De Stove ♦♦

Fish and lamb triumphs in this charming restaurant.

Menus from €16.20 to €23

Gastronomic menus from €37.10 to €52.11

4 Kleine St Amandstraat

Tel: (0)50 33 78 35 Fax: (0)50 33 79 32



Town Hall

In and around Bruges

t'Putje ♦

Good fish and meat dishes at reasonable prices.

Menus from €24.67

Gastronomic menu €37.06

31 t'Zand

Tel: (0)50 33 28 47 Fax: (0)50 34 14 23

Maximiliaan van Oostenrijk ♦

Specialising in grilled meat and fish dishes, and traditional Flemish dishes such as Waterzooi, this restaurant offers excellent value for money.

Menus from €15.99 to €22.19

Gastronomic menu €29.95

17 Wijngaardplein

Tel: (0)50 33 47 23 Fax: (0)50 34 13 00

Pubs and clubs

t Brugs Beertje

This tiny pub offers a bewildering range of speciality beers – a must for the beer connoisseur.

5 Kemelstraat

Café Vlissinghe

The oldest pub in Bruges is a charming location to relax after a busy day of sightseeing (closed Tuesday's).

2 Blekerstraat

Wijnbar Est

Bruggelingen patricians' house from 1872, with a cosy fireplace and garden terrace.

34 Noordzandstraat

Taverne Curiosa

Soak up the history, as well as the beer, in this original medieval cellar.

22 Vlamingstraat

t Fortuintje

A small nice beer pub in the city.

27 Klaverstraat

Hotels in Bruges

Please refer to terms & conditions on page 6.

De Medici Hotel ****

A four star hotel on the picturesque canals of Bruges, only a 10 minute walk from the Market Square. The hotel features an excellent Japanese restaurant KOTO.

79 rooms. From €118 to €209 per room.

Menus from €16 to €75.

15 Potterierei, 8000 BRUGES

Tel: (0)50 33 98 33 Fax: (0)50 33 07 64

1 child up to 12 years stays free

Flanders Hotel ****

Flanders hotel has a quiet location at 500 m from the Market Square and features cosy rooms with coffee and tea facilities, a delicious buffet breakfast, beautiful garden, car park, indoor swimming pool and a fun bar. A charming hotel with genuine hospitality.

41 rooms. From €115 to €250 per room.

38 Langestraat, 8000 BRUGES

Tel: (0)50 33 88 89 Fax: (0)50 33 93 45

Hans Memling Hotel ****

Charming little hotel with all 4 star amenities in the very heart of Bruges, 200 m from the market square. It also features a nice garden and patio.

36 rooms. From €85 to €173 per room.

18 Kuiperstraat, 8000 BRUGES

Tel: (0)50 47 12 12 Fax: (0)50 47 12 10

3rd night free when arriving on Sunday, Monday, Tuesday, Wednesday or Thursday in November, December 2003 or January, February 2004
children up to 2 years stay free
children up to 12 years stay at half price

Hansa Hotel ****

Luxury hotel in a refurbished 19th century patrician house in the heart of Bruges, 50 m from the Market Square. Enjoy the stylish and personal reception and service.

20 rooms. From €125 to €342 per room.

11 Niklaas Desparsstraat, 8000 BRUGES

Tel: (0)50 44 44 44 Fax: (0)50 44 44 40

children up to 2 years stay free
children up to 12 years stay at half price

Jan Brito ****

Luxury hotel in a 16th century classified monument, still featuring the original 16th and 17th century decoration with a large Renaissance garden. Quiet location in the centre of Bruges only 20m from the romantic canals and 200m from the Market Square.

18 rooms. From €119 to €210 per room.

1 Freren Fonteinstaat, 8000 BRUGES

Tel: (0)50 33 06 01 Fax: (0)50 33 06 52

Relais Oud Huis Amsterdam ****

Situated along a picturesque canal. An oasis of tranquillity at a stone's throw from the city centre. Four 17th century houses, reshaped into a luxury hotel where no room is the same. Featuring a patio, garden, bar and meeting rooms.

34 rooms. From €158 to €198 per room.

3 Spiegelrei, 8000 BRUGES

Tel: (0)50 34 18 10 Fax: (0)50 33 88 91

children up to 2 years stay free
children up to 12 years stay at half price
no single supplement

Romantik Pandhotel ****

An 18th century townhouse located in the city centre. Converted into an extremely comfortable and charming hotel with its own shop for antiques and interior decoration.

24 rooms. From €145 to €300 per room.

16 Pandreitje, 8000 BRUGES

Tel: (0)50 34 06 66 Fax: (0)50 34 05 56

children up to 2 years stay free
children up to 12 years stay at half price

Walburg Hotel ****

Luxury hotel in a classic 19th century house. Quiet and centrally located in the historic heart of Bruges at only 100m from the Belfry and the Burg Square. The hotel features a cosy bar and restaurant, sunny patio and tranquil garden.

13 rooms. From €130 to €250 per room.

Menus €40 to €75

13/15 Boomgaardstraat, 8000 BRUGES

Tel: (0)50 34 94 14 Fax: (0)50 33 68 84

children up to 2 years stay free
children up to 12 years stay at half price

Botaniek ***

An 18th Century mansion (tastefully restored). Situated in a very quiet street only 50m from the canals and the main squares. 9 charming rooms with private en suite facilities, phone, TV, buffet breakfast and taxes included.

9 rooms. From €79 to €89 per room.

23 Waalsestraat, 8000 BRUGES

Tel: (0)50 34 14 24 Fax: (0)50 34 59 39

children up to 2 years stay free
children up to 12 years stay at half price

Boudewijn I Hotel ***

In the very heart of Bruges at only 5 minutes from the railway station and the Market Square. Modern rooms with all conveniences, TV, telephone etc. The hotel features an underground car park and a nice restaurant.

11 rooms. From €106 to €174 per room.

Menus from €19 to €31

21 't Zand, 8000 BRUGES

Tel: (0)50 33 69 62 Fax: (0)50 34 44 57

3rd night free from 1 December 2003 to 18 March 2004
children up to 2 years stay free

Ibis Brugge Centrum ***

Ideally located in the historical centre, next to the Beguinage, museums and canals.

128 rooms. From €59 to €99 per room.

65A Katelijnestraat, 8000 BRUGES

Tel: (0)50 33 75 75 Fax: (0)50 33 64 19

3rd night free when arriving on Sunday,
Monday or Tuesday from 8 December 2003 to
3 February 2004
1 child up to 11 years stays free

Malleberg ***

Situated at the very heart of historic Bruges at about 5 minutes walk from the Market Square. It is a small hotel in a refurbished historic building.

8 rooms. From €72 to €87 per room.

7 Hoogstraat, 8000 BRUGES

Tel: (0)50 34 41 11 Fax: (0)50 34 67 69

no single supplement

Olympia ***

Just outside the old city walls at only 10 minutes walking distance from the historic city centre. Quiet and romantic rooms with all modern conveniences. The hotel features a cosy bar, lounge and terrace. Excellent buffet breakfast and plenty of parking spaces in the area.

30 rooms. From €60 to €110 per room.

16 Magdalenestraat, 8200 BRUGES

Tel: (0)50 39 05 78 Fax: (0)50 39 01 15

children up to 2 years stay free
children up to 12 years stay at half price

Pannenhuis Hostellerie ***

Member of 'Logis de Belgique' (awarded 3 chimneys). Peaceful family hotel with a restaurant specialising in Belgian cuisine, seafood and vegetarian cooking and a free car park.

19 rooms. From €110 to €123 per room.

Menus from €52 to €69

2 Zandstraat, 8000 BRUGES

Tel: (0)50 31 19 07 Fax: (0)50 31 77 66

3rd night free from 1 December 2003 to 15 March 2004

Cavalier **

Family run hotel in the historic heart of Bruges at only 100 m from the Markt Square. Family rooms available. Underground car park near the hotel. Open all year.

8 rooms. From €55 to €62 per room.

25 Kuipersstraat, 8000 BRUGES

Tel: (0)50 33 02 07 Fax: (0)50 34 71 99

children up to 2 years stay free
children up to 12 years stay at half price



Canal boat tours

In and around Ghent

Ghent Tourist Office
 Enquiry Desk Belfry (Raadskelder)
 17a, Botermarkt
 9000 GHENT
 Tel: (0)9 266 52 32 Fax: (0)9 225 62 88
 E-mail: toerisme@gent.be
www.gent.be

The seat of past kings and boasting over nine hundred listed buildings, Ghent was by far the largest and most prosperous city of Flanders in the Middle Ages and now stands as a medieval treasure. That is not to say that Ghent is stuck in its past. A population of 225,000 loves to party, as demonstrated in the yearly 'Ghent Festivities' where the whole city grinds to a halt for ten days (19-28 July 2004) as its residents and visitors from all over the world get down to the serious business of enjoying themselves. For the rest of the year, Ghent's residents content themselves with the many fine bars, clubs and restaurants in the city.

Visiting Ghent is to stroll through European political and cultural history. The entire art scene is vivid and creative and some of the works of the masters are preserved in the Museum of Fine Arts and St Bavo's Cathedral. However to see Ghent at its best one must take a boat trip on the waterways or enjoy a carriage trip through the ancient heart of the city - Ghent by night, when many of the historic buildings are lit up, is a sight not to be missed.

Shopping

Offering a range of shops from speciality goods to high street stores, Ghent's main shopping areas are located on Veldstraat, Volderstraat, Zonnestraat, Brabantdam and the surrounding streets, on Burgstraat and around the Vrijdagmarkt. Check out Temmerman (79 Kraanlei) for traditional confectionary, Kloskanhuis (3 Korenlei) for Belgian lace and t'Cooremetershuys (12 Graslei) for quality gifts and souvenirs.

The flea market at Bij St Jacobs and Beverhoutplein, every Friday, Saturday and Sunday from 8.00am to 1.00pm, is the perfect place to barter and find unusual souvenirs.



St. Michael's Bridge

Places of interest

St. Michael's Bridge

The three towers of Ghent, St Bavo's Cathedral, the Belfry and St Nicholas' Church can be seen from this famous bridge. Sint Michielsbrug



The Graslei



Map References

Attractions

- 1 St. Michael's Bridge
- 2 Belfry
- 3 St. Bavo's Cathedral
- 4 The Graslei and Korenlei
- 5 Castle of the Counts
- 6 Museum of Design
- 7 S.M.A.K.

Hotels

- 1 Holiday Inn Gent Expo
- 2 Hotel Adoma
- 3 Best Western Hotel Chamade
- 4 Ibis Ghent Centrum (Cathedral)
- 5 Ibis Ghent Centrum (Opera)
- 6 Monasterium Poortakere
- 7 Sint-Jorishof/St Georges



Car Parking



Bus/Coach Parking

The Belfry

The 91m high Belfry tower is one of Ghent's major landmarks and offers a breathtaking view of the city and surrounding countryside.

Sint Baafsplein

Tel: (0)9 233 39 54

St. Bavo's Cathedral

This impressive structure has witnessed important historical events, such as the baptism of the Emperor Charles V in 1500, and is decorated with priceless art treasures, including the Van Eyck brothers' Adoration of the Mystic Lamb.

Sint Baafsplein

Tel: (0)9 225 16 26 Fax: (0)9 223 39 59

The Graslei and the Korenlei

Two of the most picturesque streets in the whole of Flanders, the Graslei and the Korenlei run along the river Lys and are lined with houses dating from the 12th to 17th centuries.



Government Square

In and around Ghent

Attractions

Castle of the Counts

Once the home of the Counts of Flanders, this imposing 12th century moated fortress is now used for concert recitals and also houses a museum of torture – a hair-raising experience! Sint-Veerleplein
Tel: 09 225 93 06
Open: 1 April to 30 September, 9am-6pm; 1 October to 31 March, 9am-5pm.
Closed: 1 and 2 January, 25 and 26 December.
Admission: Adult €6.20, Child (12-26yrs) free.

Museum of Design

Many different furnished interiors ranging from Renaissance to Art Nouveau and Art Deco to contemporary art.
5 Jan Breydelstraat
Tel: (0)9 267 99 99 Fax: (0)9 224 45 22
Open: everyday except Mondays, 10am-6pm.
Closed: 1 and 2 January, 25 and 26 December.
Admission: Adult €2.48, Student (<25yrs) €1.24, Child (<12yrs) free. Adjusted prices during special exhibitions.

Places of interest around Ghent



Municipal Museum for Contemporary Art (S.M.A.K.)

Located just outside the city, the visitor will find an extensive collection of contemporary art and sculpture, by both Belgian and international artists housed in this not to be missed museum. Citadelpark
Tel: (0)9 221 17 03 Fax: (0)9 221 71 09
Open: everyday except Mondays; 10am-6pm.
Closed: 1 and 2 January, 25 and 26 December.
Admission: Adult €4.96, Student (<25yrs) €3.72.
Adjusted prices during special exhibitions.

The Lys region

One of the most beautiful areas of East Flanders is the region of the Lys. Situated to the southwest of Ghent, as far as Deinze, the river Lys makes a number of graceful turns as it winds through a charming landscape that has been the source of inspiration for many artists. Don't miss the Deinze and Lys region Museum which houses an extensive collection of paintings and

sculptures by artists who lived or worked in the Lys region or the Castle of Ooindonk which is the pearl of the region.

Where to eat and stay

The following is a list of some of the restaurants and hotels in Ghent. There are, of course, many more good quality establishments in this city, the local tourist office will be pleased to give you a more complete list.

Restaurants in Ghent

Jan Breydel ♦♦♦

Feast on Zeeland oysters and other special delicacies - the impressive menu is pure temptation!
Lunch menus from €37.18
Normal menus €49.58
Gourmet menus €69.41 (including wine)
10 Jan Breydelstraat
Tel: (0)9 225 62 87 Fax: (0)9 269 05 34

Waterzooi ♦♦♦

Sole and lobster waterzooi – luxury versions of classic Flemish cooking are served in this charming restaurant.
Menus from €49.58
2 St.-Veerleplein
Tel: (0)9 225 05 63 Fax: (0)9 225 05 63

Café Théâtre ♦♦

The theatre's own bistro restaurant offers diners international cuisine in a convivial atmosphere. Try the Andalusian Gazpacho, Japanese chicken, french fries and seafood specialities.
Menus from €37.18
5 Schouwburgstraat
Tel: (0)9 265 05 50 Fax: (0)9 265 05 59

Pakhuis ♦♦

Hidden behind the gables in the historic heart of the city. Enjoy this restaurant's French-Italian traditional cuisine, plus the oyster bar and other shellfish and seafood specialities.
Lunch menus from €10.54, Patron menu €21.07
Pakhuis menu €27.14, Dinner menu €24.79
4 Schuurkenstraat
Tel: (0)9 223 55 55 Fax: (0)9 225 71 05

Carlos Quinto Salons ♦

The plat du jour is great value and the high standard of Flemish and English cooking aims to impress.
Menus from €8.55
20 Kammerstraat
Tel: (0)9 225 59 29 Fax: (0)9 233 64 07
Open on demand

Club Mineral †

Specialities include Ostrich in Mango sauce, Horse Tornadoes with Mustard sauce, fresh seafood, salads, tagliatelli and vegetarian options.

Lunch menus from €8.55, Dinner menu €24.79

25 Onderbergen

Tel: (0)9 224 04 58 Fax: (0)9 224 36 61

Pubs and clubs

De Dulle Griet

Watch your shoe being hoisted to the rafters when you buy a Kwak beer – the glasses are so expensive the barman doesn't want you running away with them!

50 Vrijdagmarkt

t'Galgenhuisje

Squeeze yourself into the picturesque interior of the smallest and oldest bar in the city.

5 Groentenmarkt

Kunstencentrum Vooruit

This large café belongs to the Arts centre of the same name, and is the meeting place of theatre/concert goers and students alike.

23 St.Pietersnieuwstraat

t' Velootje

This bar has to be seen to be believed! A huge array of antique bicycles and other curiosities are suspended from the ceiling, making for a unique night out.

2 Kalversteeg

Hotels in Ghent

Please refer to terms & conditions on page 6.

Holiday Inn Gent Expo ****

Modern hotel, easily accessible, renovated rooms, traditional restaurant and leisure facilities.

134 rooms. From €89 to €215 per room.

Menus from €23 to €39.

3 Maaltekouter, 9051 GHENT

Tel: (0)9 220 24 24 Fax: (0)9 222 66 22

children up to 12 years stay free
no single supplement

Hotel Adoma ***

This charming family-run hotel is situated in a quiet area near the railway station. The city centre is easily accessible by tram. The rooms are modern with large en-suite facilities. Pets are welcome.

15 rooms. From €55 to €65 per room.

19 Sint Denijslaan, 9000 GHENT

Tel: (0)9 222 65 50 Fax: (0)9 245 09 37

children up to 2 years stay free
children up to 12 years stay at half price
no single supplement

Best Western Hotel Chamade ***

Comfortable hotel located near the railway station. Group bookings accepted.

45 rooms. From €123 to €144 per room.

2 Blankenbergestraat, 9000 GHENT

Tel: (0)9 220 15 15 Fax: (0)9 221 97 66

Ibis Ghent Centrum (Cathedral) ***

Located in the historical city centre, next to St. Baafs Cathedral, the Belfry and Town Hall.

120 rooms. From €69 to €79 per room.

2 Limburgstraat, 9000 GHENT

Tel: (0)9 233 00 00 Fax: (0)9 233 10 00

3rd night free in December 2003 and January, February,
July and August 2004

Ibis Ghent Centrum (Opera) ***

Located in the historical city centre, next to the opera house.

134 rooms. From €66 to €71 per room.

24/26 Nederkouter, 9000 GHENT

Tel: (0)9 225 07 07 Fax: (0)9 223 59 07

3rd night free in August and December 2003 and
January, February, July and August 2004
1 child up to 11 years stays free

Monasterium Poortackere *

This neo-gothic convent was recently turned into a charming hotel and restaurant. It is a tranquil place where history and comfort merge. The rooms are modern without having lost their traditional feel.

14 rooms. From €120.23 per room.

Menus from €24 to €44.

56 Oude Houtlei, 9000 GHENT

Tel: (0)9 269 22 10 Fax: (0)9 269 22 30

children up to 2 years stay free
children up to 12 years stay at half price

Sint-Jorishof/St Georges *

Oldest hotel in Europe (1228) and a charm all of its own. Centrally located in front of the city hall, with car-parking and an excellent restaurant known for its Flemish and Belgian cuisine.

26 rooms. From €115 to €175 per room.

Menus from €27.50 to €43.50.

2 Botermarkt, 9000 GHENT

Tel: (0)9 224 24 24 Fax: (0)9 224 26 40

children up to 12 years stay free

In and around Antwerp

Antwerp Tourist Office
 13 Grote Markt
 2000 ANTWERP
 Tel: (0)3 232 01 03 Fax: (0)3 231 19 37
 E-mail: visit@antwerpen.be
www.visitantwerpen.be

City of art, city of diamonds, city of fashion...to describe Antwerp in a few words is simply impossible. Once one of the greatest cities in the world, it is now known as the world trading centre for diamonds, with 70% of the world's diamonds being traded here – and a large proportion of these are cut and polished in the city as well.

In the 16th century, Antwerp became a centre for art, intellect and learning - boasting one of the world's most important early book printing and publishing houses, the Plantin-Moretus, and great baroque masters such as Rubens and Van Dyck. Its fine buildings and art treasures are a constant reminder of its glorious past.

Antwerp's rich heritage sits comfortably alongside its thriving industry and commerce. With many restaurants, bars and an excellent nightlife, Antwerp, is a truly cosmopolitan city set in historical surroundings.



Fashion House

Shopping

Shopping in Antwerp is a real experience. As the fashion capital of Belgium, there is something here to suit every taste and budget.

The main shopping streets of the Meir, Huidevettersstraat and de Wilde Zee, offer high street stores, small boutiques and specialist shops. For upmarket boutiques and antique shops search out Schuttershofstraat, Steenhouwersvest and Leopoldstraat, while bric-a-brac and antiques can be found on Hoogstraat, Kloosterstraat and Wolstraat.

'Het Zuid', the 'southern district' around



Antwerp Town Hall



Map References

Attractions

- 1 Cathedral of Our Lady
- 2 Vlaeykengang
- 3 Rubens House
- 4 Botanical Gardens
- 5 Antwerp Zoo
- 6 Prov. Diamond Museum
- 7 Plantin-Moretus Museum

Hotels

- 1 Radisson SAS Park Lane
- 2 Eurotel
- 3 Golden Tulip Hotel Carlton
- 4 Scandic Hotel Antwerpen
- 5 Hotel Campanile Antwerpen
- 6 Ibis Antwerp Centrum

Pc Car Parking **Pb** Bus/Coach Parking

Sint-Jansvliet Flea Market



Waalse- and Vlaamsedaai and the Leopold de Waelplaats, has the reputation of being 'hip, modern, artistic and convivial'. A number of the better art galleries, fashion houses and trendy restaurants have found a niche for themselves in renovated warehouses and many young people have chosen to make their home in this district.

The diamond district is centred around Vestingstraat, Rijfstraat, Hovenierstraat and Schupstraat. Burie (3 Korte Gasthuisstraat) provides temptation for chocoholics, while HIT! offers young, trendy clothes at 43 Kammenstraat. For the designerholics, Walter (12 St Antoniusstraat) and Het Modepaleis (16 Nationalestraat) offer the best of Flemish fashion.

The flea markets on Lijnwaadmarkt (Saturday) and Sint-Jansvliet (Sunday) offer a wealth of unusual items at bargain prices and the Rubens market on 15 August every year provides a wonderful spectacle, with the traders dressing up in finery from a bygone era.

In and around Antwerp

Places of interest

Cathedral of Our Lady

The largest and tallest gothic church in the Low Countries, this beautiful monument took over 150 years to build. The interior is richly decorated by a number of Rubens' paintings, colourful stained glass windows, sculptures, tombs and carvings.

Handschoenmarkt
Tel: (0)3 213 99 40 Fax: (0)3 231 86 17

Vlaeykengang

Despite its many visitors, this is still an oasis of peace in the historic city centre. This jumble of little alleyways is the perfect place for listening to carillon (bell ringing).

Entrance 16 Oude Koornmarkt

Attractions

Rubens' House

The house where Rubens lived and worked for most of his life provides a tantalising glimpse into the life and times of one of the most revered painters of the seventeenth century.

9-11 Wapper

Tel: (0)3 201 15 55 Fax: (0)3 227 36 92

Open: everyday except Mondays, 10am-5pm.

Closed: 1 and 2 January, 1 and 2 November, 25 and 26 December.

Admission: Adult €5, Child €2.5, free admission on Fridays.



Cathedral of Our Lady

Botanical Garden

Located next to the St Elisabeth Hospital and adjoining the Elzenveld culture and conference centre, the Peace centre and the School Museum, the Botanical Garden is an oasis in the heart of the city. It contains 2,000 noteworthy and rare species and a greenhouse that provides protection for cacti and (sub)tropical plants.

Leopoldstraat

Tel: (0)3 232 40 87

Open: everyday, 9am-5.30pm.

Admission: free.



Rubens' House Museum



Antwerp Zoo

Antwerp Zoo

One of the oldest and most famous zoos in the world with over 4,000 animals, Antwerp zoo is known for its breeding programmes for threatened species and for its scientific research.

26 Koningin Astridplein

Tel: (0)3 202 45 40 Fax: (0)3 231 00 18

Open: everyday; Summer, 10am-6.15pm; Winter, 10am-4.30pm.

Admission: Adult €13, Child (3-11yrs) €8.50.

Provincial Diamond Museum

This museum recently opened its doors next to the Antwerp Zoo. This museum will satisfy the needs of visitors with an emphasis on interaction and hands-on involvement. Moreover, the information is accurate, up-to-date and attractively packaged. Discover the history of diamonds and the diamond production process and be dazzled by the priceless gems on display in the treasure chamber. There is also a reconstructed 19th century workshop on display where visitors can watch diamond cutters at work from Monday to Saturday.

19-24 Koningin Astridplein

Tel: (0)3 202 48 90 Fax: (0)3 202 48 98

Open: everyday, 10am-6pm.

Closed: 25 and 26 December.

Admission: Adult €5, Child €3, free admission on Fridays.

Plantin-Moretus Museum

This authentic printing works dates back to the time of Antwerp's most glorious age. Once the most famous in Europe, visitors can now see the whole production process and even participate in workshops of traditional printing techniques, and admire the original interior of the house, from its sumptuous furniture to the original leather embossed wall-coverings.

22 Vrijdagmarkt

Tel: (3) 221 14 50 Fax: (0)3 221 14 94

Open: everyday except Mondays, 10am-5pm.

Closed: 1 and 2 January, 1 May, Ascension Day, 25 and 26 December.

Admission: Adult €4, Child €2, free admission on Fridays.

Places of interest around Antwerp

Zurenborg district

This district, situated between Berchem station and the Tramplaat has to be the flagship of sublime architecture. Apart from the prestigious Cogels-osylei, six other streets lined with large town houses in eclectic architectural styles and dating from the end of the nineteenth and early twentieth centuries, form a unique townscape.

Middleheim Open-Air Museum of Sculpture

A permanent collection of 300 sculptures, mostly in the open-air can be found just outside the Antwerp ring road and south of the city in a park purchased in 1910 to prevent the area from becoming over-developed.

16 Middleheimlaan

Tel: (0)3 828 13 50 Fax: (0)3 825 28 35

Open: everyday except Mondays; 1 October to 31 March, 10am-5pm; April and September 10am-7pm; May and August 10am-8pm; June and July 10am-9pm. Open Easter Monday and Whit Monday.

Closed: 1 and 2 January, 1 May, Ascension day, 1 and 2 November, 25 and 26 December.

Admission: free.

Sterckshof Provincial Museum-Silver Centre

Housed in a reconstructed 16th century castle set in the midst of Ter Rivierenhof park, visitors can follow the silver production process from ore to silverware, view silver from the middle ages to the present day and watch silversmiths at work.

160 Hoofvonderlei

2100 DEURNE

Tel: (0)3 360 52 50 Fax: (0)3 360 52 53

Open: everyday except Mondays, 10am-5.30pm.

Closed: 25 December to 2 January.

Admission: free (except temporary exhibitions which are payable).



Middleheim Open-Air Museum of Sculpture

In and around Antwerp

Antwerp at night



Where to eat and stay

The following is a list of some of the restaurants and hotels in Antwerp. There are, of course, many more good quality establishments in this city, the local tourist office will be pleased to give you a more complete list.

Restaurants in Antwerp

Sir Anthony Van Dyck ♦♦♦

Superior Belgian and French cuisine in beautiful and tranquil surroundings.

4 course menus from €40.

16 Oude Koormarkt

Tel: (0)3 231 61 70 Fax: (0)3 225 11 69

t'Fornuis ♦♦♦

The set menu is a good introduction to the best of the Belgian culinary excellence.

4 course menus from €87.

24 Reynderstraat

Tel: (0)3 233 62 70 Fax: (0)3 233 99 03

t'Hofke ♦♦

Traditional French/Belgian cuisine is served in this typical bistro restaurant. Enjoy its tasteful 16th century décor inside or sit outside on the terrace during the summer months.

Menus from €25.

16 Oude Koormarkt

Tel: (0)3 233 86 06 Fax: (0)3 233 86 06

Dock's Café ♦♦

A fashionable restaurant with quirky but stylish décor - known for the excellence of its seafood - situated on the edge of the waterfront.

3 course menus from Chefs menu, €19 or Docks menu, €24.

7 Jordaenskaai

Tel: (0)3 226 63 30 Fax: (0)3 226 65 72

Huisbrouwerij 't Pakhuis ♦

Calling all beer lovers - the chef uses Belgium's most famous tippie to great effect for a variety of recipes.

Menus from €30.99.

76 Vlaamse Kaai

Tel: (0)3 238 12 40 Fax: (0)3 238 68 14

Pubs and clubs

Café Het Elfde Gebod

The name translates as 'the 11th Commandment', which explains the amazing collection of statues of saints and other religious iconography lining the walls. Flemish cuisine.

10 Torfbrug

De Vagant

This famous café stocks a huge number of different jenever - almost one for each day of the year! The owner is a world renowned expert on the spirit and also owns the restaurant upstairs and a shop across the street.

25 Reynderstraat



Dining out

Hopper

The best of live jazz makes for a great night out.
2 Leopold de Waelstraat

Cartoons

One of the trendiest new cafes in the city, this basement venue is the place to be seen.
4-6 Kaasstraat

Café d'Anvers

This legendary club is heaven for clubbers, attracting the best international DJs and a relentless party crowd.
15 Verversrui

De Cinema

A new nightclub offering a great party atmosphere and a guaranteed good time.
Lange Brilstraat

Café Local

Popular club in an old warehouse in the south of Antwerp. Multiple rooms, floors & bars for a selection of House, R & B and the freshest sounds around town.
25 Waalsekaai

Hotels in Antwerp

Please refer to terms & conditions on page 6.

Radisson SAS Park Lane Hotel *****

Luxury hotel, situated opposite the city park a few minutes walk from the historic city centre. The ultimate in comfort for tourists seeking quality accommodation. The hotel features an underground car park, swimming pool, Jacuzzi, solarium, sauna and fitness centre.

170 rooms. From €120 to €227 per room.

Menus from €30 to €62.

34 Van Eycklei, 2000 ANTWERP

Tel: (0)3 285 85 85 Fax: (0)3 285 85 86

children up to 17 years stay free

Eurotel *****

Centrally located only 100 m from the Central Station, this typical Antwerp hotel will charm you with its hospitality and service. All rooms have modern facilities such as air-conditioning, TV, digital telephone, hairdryer etc. The hotel also has a spacious car park.

148 rooms. From €75 to €115 per room.

2 Copernicuslaan, 2018 ANTWERP

Tel: (0)3 223 40 40 Fax: (0)3 223 40 41

1 child up to 12 years stays free

Golden Tulip Hotel Carlton *****

Modern 4 star hotel facing the city park within easy walking distance from the world famous diamond and shopping centre and the central station.

127 rooms. From €88 to €110 per room.

Menus from €32 to €42.

25 Quinten Matsijslei, 2018 ANTWERP

Tel: (0)3 231 15 15 Fax: (0)3 225 30 90

1 child up to 12 years stays free

Scandic Hotel Antwerpen *****

Recently renovated 4 star hotel with car park, excellent restaurant and a brand new leisure centre, including indoor pool, sauna and hammam (turkish steam bath).

204 rooms. From €89 to €105 per room.

Menus from €20 to €25.

66 Lt. Lippenslaan, 2140 ANTWERP

Tel: (0)3 235 91 91 Fax: (0)3 235 08 96

children up to 2 years stay free,
children up to 12 years stay half price

Hotel Campanile Antwerpen ***

Strategically located by the ring road, only 10 minutes walk from the city centre. Good public transport connections with train, tram and bus stations only 500 m from the hotel. Large free car park, hotel restaurant and meeting facilities available.

126 rooms. From €74 to €84 per room.

Menus from €13 to €23.

2 Potvlietlaan, 2600 ANTWERP

Tel: (0)3 236 43 55 Fax: (0)3 236 56 53

children up to 12 years stay free
no single supplement

Ibis Antwerpen Centrum ***

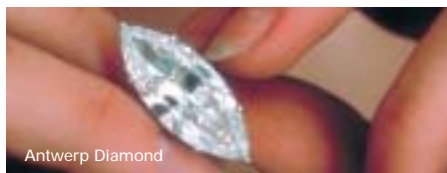
Situated in the very heart of the historic city centre and near to the famous Rubens House and main shopping streets.

150 rooms. From €65 to €70 per room.

39 Meistraat, 2000 ANTWERP

Tel: (0)3 231 88 30 Fax: (0)3 234 29 21

3rd night free from 1 August to 31 August 2003
1 child up to 11 years stays free



Antwerp Diamond

Brussels Tourist Office

Brussels Town Hall, Grand-Place
1000 BRUSSELS

Tel: (0)2 513 89 40 Fax: (0)2 513 83 20

E-mail: info@brusselstourism.be

www.brusselsdiscovery.com



There is a lot more to Brussels than its role as the seat of the European Parliament and NATO headquarters. With over 90 museums, more Michelin stars per km than any other European city, bars and cafés on every corner, beautiful architecture and a rich history, this city has plenty to offer visitors in terms of culture, arts, heritage and entertainment.

Established in the 6th century, Brussels grew in power under the 16th century rule of the Habsburgs, with the heart of the city remaining an evocative reminder of this past glory. Since the important Brussels-led rebellion in 1830, which led to the Dutch being ousted and the creation of the Belgian state, Brussels has grown from strength to strength, despite being occupied by the Germans in World War II. No amount of occupation over the centuries diminished its remarkable spirit. With a current population of 970,500, the capital of Belgium and Flanders is a thriving metropolis, full of life and unique character.

Shopping

The main shopping streets are to be found around Monnaie Square, rue Antoine Dansaert, the Grand-Place and Galleries St Hubert. Mainstream shops and department stores can be found on rue Neuve, while uptown - on Avenue Louise, Porte de Namur and Boulevard de Waterloo - is a paradise of designer clothes and jewellery. For fine antiques and curiosities, the Sablon area, rue Blaes, rue Haute, rue Watteeu and rue de Minimes provide the perfect hunting-ground.

Slumberland (23 rue des Sables) is a treasure trove for comic book fans, De Biertempel (56 rue du Marché aux Herbes) is a must for a wide range of souvenir beers and beer glasses, while Delvaux (Galleries St Hubert) offers the best of Belgian leather goods, including wonderful handbags, wallets and belts. For those who prefer to haggle, there are some real finds to be had at the flea market on Place du Jeu de Balle, open daily from 7am-2pm and on Place Saint Catherine, open daily from 7am-5pm. For those

with an eye for fine antiques, the antiques market on Place du Grand Sablon, every Saturday from 9am-6pm and every Sunday from 9am-2pm, is not to be missed.

Places of interest

Grand-Place

An excellent place to sit with a Belgian beer at one of the cafés and soak up the atmosphere, this bustling square is a world heritage site. Opposite the ornate **Town Hall** is the **City of Brussels Museum**, which as well as giving a thorough account of the city's history, houses the many costumes of the Manneken-Pis. For visitors who want to learn the secret of the excellence of Belgian beer, **The Museum of Brewing** is located in the former guild house of the Corporation of Brewers. A newcomer on the square is the **Cocoa and Chocolate Museum**.

Manneken-Pis

This cheeky Brussels mascot is visited by thousands of people each year, and is so well regarded that he even has a special keeper to give him a daily polish and dress him in one of his many special ceremonial outfits.

Corner Eikstraat/Stoofstraat



Manneken-Pis

Attractions

Royal Museum of Fine Arts

A haven for art lovers, the museum consists of two sections each exhibiting ancient and modern art - from Memling, Breughel, Rubens and Rodin, to Delvaux, Magritte and more contemporary work.

3 Regenschapsstraat

Tel: (0)2 508 32 11 Fax: (0)2 508 32 32

Open: everyday except Mondays; 10am-5pm.

Closed: 2nd Thursday of January, 1 May, 1 November and 25 December.

Admission: Adult €5, Child (12-18yrs) €2, Child (<12yrs) free.



Grand-Place



Map References

Attractions

- 1 Grand-Place
- 2 Manneken-Pis
- 3 Royal Museum of Fine Arts
- 4 Belgian Comic Strip Centre
- 5 MIM - Musical Instruments Museum

Hotels

- 1 Radisson SAS Hotel
- 2 Hotel Floris Louise
- 3 Schuman Picasso Hotel
- 4 Comfort Art Hotel Siru
- 5 Ibis Brussels Airport
- 6 Ibis Brussels Centre Gare du Midi
- 7 Ibis Brussels Centre St. Catherine
- 8 Ibis Brussels Expo-Atomium
- 9 Ibis Brussels Off Grand-Place
- 10 Hotel Ustel
- 11 Hotel Saint-Michel

P_c Car Parking

P_B Bus/Coach Parking

In and around Brussels

Belgian Comic Strip Centre

Kids big and small will love this colourful museum. Housed in former warehouses designed by the Art Nouveau architect, Victor Horta, the centre takes visitors on an entertaining journey through the history of the comic strip.

20 Zandstraat

Tel: (0)2 219 19 80 Fax: (0)2 219 23 76

Open: everyday except Mondays; 10am-6pm.

Closed: 1 January and 25 December.

Admission: Adult €6.20, Child (6-11yrs) €2.50, Child (<6yrs) free.

MIM - Musical Instruments Museum

The only collection of its kind in the world, four levels of exhibition space show nearly 1500 instruments all set out in an admirable building, the former Art Nouveau 'Old England' stores. Organised activities and interactive terminals plunge you into the mysterious world of sound.

2 Rue Montagne de la Cour

Tel: (0)2 545 01 30 Fax: (0)2 545 01 78

Open: Tuesdays to Fridays, 9.30am-5pm; Saturdays and Sundays, 10am-5pm; Thursdays, 9.30am-8pm.

Closed: 1 January and 1 May, 11 November and 25 December.

Admission: Adult €3.72, Child €1.24.

The Laeken district of Brussels

Laeken and the Heizel plateau of Brussels is an excellent place for a day trip with the whole family. The Atomium offers a panoramic view of the whole of Brussels including the nearby Royal Palace and Bruparck; which encompasses Mini-Europe, the subtropical aquatic world of Oceade, Kinopolis (a 24 auditorium cinema complex with its giant IMAX screen) and the nearby village with its cafés and restaurants.

Atomium

Depicting an iron molecule magnified 165 billion times, this towering monument was erected as a symbol of scientific progress during the Universal Exhibition of 1958. Take the lift to 100 metres to experience an unparalleled view of Brussels.

Eeuwfeestlaan, (Heizel)

Tel: (0)2 475 47 77 Fax: (0)2 475 47 79

Open: 1 April to 31 August, 9am-7.30pm; 1 September to 31 March, 10am-5.30pm.

Refurbishment work starting early 2003, but Atomium still open to the public. Closed during 2004. Reopens 2005.

Admission: Adult €5.45, Child (<12yrs) €3.97, Child (up to 1.2 m) free.

Mini-Europe

Located near the Atomium monument, visitors can explore Europe in the space of a few hours. The collection of 300 scale models of Europe's most impressive buildings, including the Houses of Parliament and Big Ben in London, are reproduced with amazing detail.

Bruparck (Heizel)

Tel: (0)2 478 05 50 Fax: (0)2 478 26 75

Open: 23 March to 5 January.

Closed: 6 January to end March.

Admission: Adult €11, Child (<12yrs) €3.50, Child (up to 1.2 m) free.

Chinese Pavilion

Built on the edge of the Royal estate at Laeken, this wooden pavilion was originally crafted in Shanghai and houses a stunning collection of Chinese ceramics.

44 Avenue Van Praet

Tel: (0)2 268 16 08 Fax: (0)2 268 16 08

Open: everyday except Mondays; 10am-5pm.

Closed: 1 January, 1 May, 1 and 11 November and 25 December.

Admission: (combined ticket with Japanese Tower) Adult €2.97, Child €1.98.

Every first Wednesday afternoon of the month (1pm-4pm): free admission.

Japanese Tower

Following the Paris Universal Exhibition in 1900, King Leopold II decided to commence building work on the Japanese tower. Today it is home to temporary exhibitions on various aspects of Japanese art.

44 Avenue Van Praet

Tel: (0)2 268 16 08 Fax: (0)2 268 16 08

Open: everyday except Mondays; 10am-5pm.

Closed: 1 January, 1 May, 1 and 11 November and 25 December.

Admission: (combined ticket with Chinese Pavilion) Adult €2.97, Child €1.98.

Every first Wednesday afternoon of the month (1pm-4pm): free admission.



Atomium

The Parc du Cinquantenaire District of Brussels

This majestic park was created in 1880 to host the exhibition organised to celebrate Belgium's fifty years of Independence. Three internationally renowned museums are housed here in magnificent buildings, not to mention the stunning triple Arcade (resembling a mini Arc de Triomphe) that is crowned with a bronze quadringa and surrounded by eight statues of women who symbolise the provinces.

Autoworld

Rightly seen as one of the most prestigious of its kind in Europe, this museum traces the history of the motor car from 1886 to the 1970's. Some rare models are on show that formerly belonged to 20th century celebrities.

11 Parc du Cinquantenaire

Tel: (0)2 736 41 65 Fax: (0)2 736 51 36

Open: 1 April to 30 September, 10am-6pm; 1 October to 31 March, 10am-5pm.

Admission: Adult €5, Child (6-13yrs) €2.

Cinquantenaire Museum – Royal Museums of Art & History

This museum houses material and artefacts from various civilisations and is divided into four main sections: national archaeology, antiquity, non-European civilisations and European decorative arts.

10 Parc du Cinquantenaire

Tel: (0)2 741 72 11 Fax: (0)2 733 77 35

Open: everyday except Mondays; Tuesday to Friday, 9.30am-5pm; Saturday, Sunday and Public Holidays, 10am-5pm. Treasury open 10am-noon and 1pm-4pm. Closed: 1 January, 1 May, 11 November and 25 December.

Admission: Adult €3.72, Child €2.48.

Free admission every 1st Wednesday of the month except for exhibitions.

Royal Museum of the Army and Military History

Presents an authentic parade of uniforms, flags and weapons, mainly from the last two centuries. With its tens of thousands of exhibits, it is considered one of the world's leading military museums. Don't forget to visit the panorama overlooking the Arcade whilst here.

3 Parc du Cinquantenaire

Tel: (0)2 737 78 11 Fax: (0)2 737 78 02

Open: everyday except Mondays; 9am-noon and 1pm-16.45pm.

Admission: free.



Autoworld

Places of interest around Brussels

Vast expanses of countryside, scattered with charming villages, surround the capital. Visit the Pajotteland which has some fine preserved manor houses, and the real gem of the area - the Castle of Gaasbeek. Also visit the National Botanical Gardens of Meise and the medieval fortress of Beersel - but don't forget to try some local brews and regional dishes en route.

Castle of Gaasbeek

Built in the 13th century, this castle is the region's number one architectural attraction and is also surrounded by a forest with plenty of footpaths for exploring. Fundamental restorations and improvements have given it its present appearance. The rooms house a rich collection of antique furniture, tapestries and sculpture.

40 Kasteelstraat

1750 GAASBEEK

Tel: (0)2 532 43 72

Open: everyday except Mondays and Fridays; 1 April to 31 October, 10am-5pm; July and August, also open on Mondays.

Admission: Adult €4.

National Botanical Gardens of Meise

Bouchout is especially known for the National Botanical Gardens, which have been located here since 1963. In huge exhibition glasshouses, it is not hard to imagine yourself being in a real tropical jungle with the impressive collections of tropical and sub-tropical plants and trees, arranged according to their region of origin.

Domein van Bouchout

1860 MEISE

Tel: (0)2 260 09 70 Fax: (0)2 260 09 47

Open: everyday; Summer 9am-6pm; Winter, 9am-5pm.

Admission: Adult €4, Child €3, Child (<7yrs) free.

In and around Brussels



Beersel Castle

Beersel Castle

A castle with three towers and a moat, built at the beginning of the 14th century and rebuilt after the siege in 1489. Although the interior is austere, the castle is a fine example of a Guarded house with its defences of deep ditches and towers with crenels and loopholes still intact.

Lotsestraat

1650 BEERSEL

Tel: (0)2 331 00 24

Open: 1 March to 15 November, everyday except Mondays, 10am-noon and 2pm-6pm; 16 November to 28 February, Saturday & Sunday only, 10.30am-5pm.

Admission: Adult €2.50, Child €1.25.

Where to eat and stay

The following is a list of some of the restaurants and hotels in Brussels. There are, of course, many more good quality establishments in this city, the local tourist office will be pleased to give you a more complete list.

Restaurants in Brussels

Comme Chez Soi ♦♦♦

Tempt your taste buds with the six-course gastronomic menu or the four-course seasonal menu – an ideal venue for any special occasion.

4 course menus from €92.96

6 course gastronomic menus from €105.35

23 Place Rouppe

Tel: (0)2 512 29 21 Fax: (0)2 511 80 52

La Maison du Cygne ♦♦♦

Try the exquisite braised lamb or the turbot, both are specialities of this top restaurant.

Menus from €64.40 to €69.41, à la carte €79.33

2 Rue Charles Buls

Tel: (0)2 511 82 44 Fax: (0)2 514 31 48

Aux Armes de Bruxelles ♦♦

Appreciate the wonderful traditional Belgian cuisine in one of Brussels' most established restaurants, where shrimp croquettes are a house speciality.

Menus from €27.27, à la carte €34.71 to €37.18

13 Rue de Bouchers

Tel: (0)2 511 55 98 Fax: (0)2 514 33 81

Bonsoir Clara ♦♦

The stylish modern interior perfectly compliments the Mediterranean and French menu – definitely a place to see and be seen!

Menus from €29.75 to €39.66

22 Rue Antoine Danseart

Tel: (0)2 502 09 90 Fax: (0)2 502 55 57

t'Kelderke ♦♦

Enjoy the speciality rabbit in Geuze beer and other well-priced traditional Brussels fare in the cosy atmosphere of this 16th century cellar.

A la carte menus from €18.59 to €23.55

15 Grand-Place

Tel: (0)2 513 73 44 Fax: (0)2 512 30 81

Bleu de Toi ♦

Savour a special type of potato "Bintje" in contemporary surroundings.

Menus from €37.18, à la carte €17.70 to €42.14

73 Rue des Alexiens

Tel: (0)2 502 43 71 Fax: (0)2 502 43 71

Pubs and clubs

La Morte Subite

The good beer menu is only one of the reasons to visit this late - 1900 bar. Add to this an evocative décor and lively atmosphere and you are guaranteed a good night out.

7 Rue Montagne aux Herbes Potagères

Café Greenwich

The wonderful art nouveau detail and the local chess-playing clientele make this café-bar the perfect place to while away an afternoon or evening.

7 Rue des Chartreux

Fuse

Dance to the latest DJs with Brussels' beautiful people every Saturday night - the club is one of the most fashionable in the city and a temple to techno music.

208 Rue Blaes

Hotels in Brussels

Please refer to terms & conditions on page 6.

Radisson SAS Hotel *****

The hotel is located in the heart of the city, close to the Royal Saint-Hubert gallery, the main shopping area and the world famous 'Grand-Place'. The perfect place to stay in Brussels.

281 rooms. From €159 to €320 per room.

Menus from €26 to €160.

47 Wolvengracht, 1000 BRUSSELS

Tel: (0)2 227 31 31 Fax: (0)2 223 18 18

children up to 17 years stay free

Hotel Floris Louise ****

New 4 star hotel in a quiet street near the mundane 'Louizalaan', close to the shopping area, pubs and excellent restaurants. This is a charming little hotel.

29 rooms. From €69 to €186 per room.

59 Eendrachtstraat, 1000 BRUSSELS

Tel: (0)2 515 00 60 Fax: (0)2 503 35 19

3rd night free during low-season (August, December 2003, January, February 2004)

Schuman Picasso Hotel ****

Brand new hotel with comfortable rooms, located in city centre.

56 rooms. From €89 to €260 per room.

20 Breydelstraat, 1040 BRUSSELS

Tel: (0)2 280 40 00 Fax: (0)2 282 10 70

**children up to 12 years stay free
no single supplement**

Comfort Art Hotel Siru ***

This hotel is truly unique. No less than 130 Belgian artists decorated the hotel. The rooms are arty, modern and have all modern conveniences. The ideal starting point for your discovery of Brussels.

101 rooms. From €100 to €210 per room.

Menus from €20 to à la carte. Restaurant closed on Saturday and Sunday.

1 Rogierplein, 1210 BRUSSELS

Tel: (0)2 203 35 80 Fax: (0)2 203 33 03

3rd night free during the weekend

Ibis Brussels Airport ***

Situated next to Brussels International Airport and the NATO headquarters.

96 rooms. From €69 to €130 per room.

17 Bessenveldstraat,

1831 DIEGEM-MACHELEN

Tel: (0)2 725 43 21 Fax: (0)2 725 40 40

**3rd night free from 13 December 2003 to 30 March 2004
1 child up to 11 years stays free**

Ibis Brussels Centre Gare du Midi ***

Located in the city centre, next to the Gare du Midi (for Thalys, TGV and regional train services).

225 rooms. From €69 to €114 per room.

2-20 Rue d'Angleterre, 1060 BRUSSELS

Tel: (0)2 541 44 44 Fax: (0)2 541 44 45

**3rd night free from 13 December 2003 to 30 March 2004
1 child up to 11 years stays free**

Ibis Brussels Centre St. Catherine ***

Located in the very heart of the European capital at only 500 metres from the famous Grand-Place.

236 rooms. From €89 to €130 per room.

2 Joseph Plateaustraat, 1000 BRUSSELS

Tel: (0)2 513 76 20 Fax: (0)2 514 22 14

**3rd night free from 13 December 2003 to 30 March 2004
1 child up to 11 years stays free**

Ibis Brussels Expo-Atomium ***

Located opposite the 'new' main entrance of the Brussels Expo and in the vicinity of the Atomium, Bruparck and Mini-Europe.

81 rooms. From €66 to €120 per room.

572 Romeinsesteenweg,

1853 STROMBEEK-BEVER

Tel: (0)2 461 00 21 Fax: (0)2 461 04 84

**3rd night free from 13 December 2003 to 30 March 2004
1 child up to 11 years stays free**

Ibis Brussels Off Grand-Place ***

Situated at only 50 metres from the world famous Grand-Place, in the very heart of Brussels.

184 rooms. From €109 to €141 per room.

100 Grasmarkt, 1000 BRUSSELS

Tel: (0)2 514 40 40 Fax: (0)2 514 50 67

**3rd night free from 13 December 2003 to 28 February 2004
1 child up to 11 years stays free**

Hotel Ustel ***

Comfortable and charming 3 star hotel. The hotel features a large summer garden and a renowned restaurant in historic surroundings (La Grande Ecluse).

114 rooms. From €59 to €168 per room.

Menus from €19 to €45.

6-8 Luchtvaartplein, 1070 BRUSSELS

Tel: (0)2 520 60 53 Fax: (0)2 520 33 28

children up to 12 years stay free

Hotel Saint-Michel **

The only hotel situated on the Grand-Place. From your window you have a view over the majestic guild houses of this famous square. An excellent start for a discovery tour of Brussels.

15 rooms. From €90 to €129 per room.

Menus from €24 to €32.

15 Grand-Place, 1000 BRUSSELS

Tel: (0)2 511 09 56 Fax: (0)2 511 46 00

**children up to 2 years stay free
children up to 12 years stay at half price**

In and around Mechelen

Mechelen Tourist Office
 Stadhuis, 21 Grote Markt
 2800 MECHELEN
 Tel: (0)15 29 76 55
 Fax: (0)15 29 76 53
 E-mail: toerisme@mechelen.be
www.mechelen.be

Former Palace of Margaret of Austria



Mechelen, like many other Flemish cities, first became prosperous through the trade of textiles and cloth in the early medieval period. The Grand Council, the most powerful court in the land, was established in the city in 1473. Later Mechelen became the capital of the Burgundian Netherlands during the reign of Margaret of Austria, regent for Charles V, in the early 16th century. Famous for tapestry, furniture and Baroque woodcarving, Mechelen has been an archbishopric since 1559.

Home to an internationally acclaimed carillon school, music remains an important part of the city's culture. Mechelen also boasts three important UNESCO World Heritage sites: Saint Rumbold's Tower, the Belfry of the Town Hall and the Groot Beguinhof. However it still remains essentially a working city; whether looking for culture or fine food, this unpretentious city has it all in one charming place.

Shopping

The main shopping street is Bruul and there are a number of fine speciality shops around the area of the Grote Markt. In particular, Carre D'Art (5 Guldenstraat), selling furniture and home decorations, and Verberdt-Kordt (1 Schoenmarkt), an exclusive jewellery shop and gallery (10 Dijle), not to mention the chocolate confectioner Gauthier (2 Guldenstraat), are all well worth visiting. Saturday is market day in the city where you will find a cheerful hustle and bustle.

Places of interest

St. Rumbold's Cathedral

The 14th and 15th century Saint Rumbold's Cathedral is one of the finest buildings in the city, and arguably one of the finest in the whole of Flanders. Its priceless art collection includes fine examples of Van Dyck and other Flemish masters. However, it is the Belfry that is the jewel in its crown - 514 steps lead to the upper gallery of the tower that houses two bronze carillons. The city is filled with music during the regular carillon concerts in the summer months, which take place on Monday evenings from 8.30pm-9.30pm.

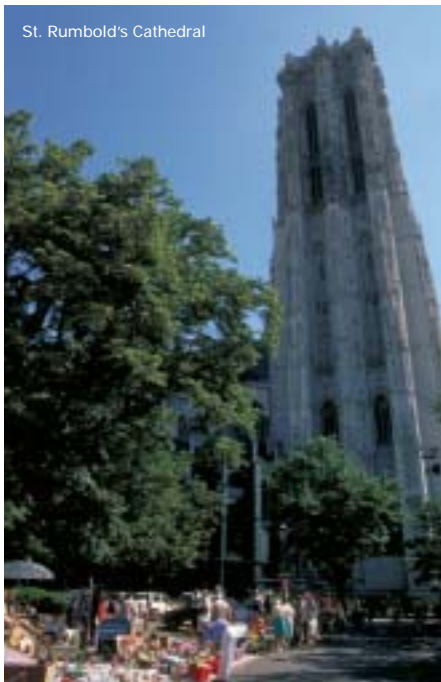
Towers along the Dijle

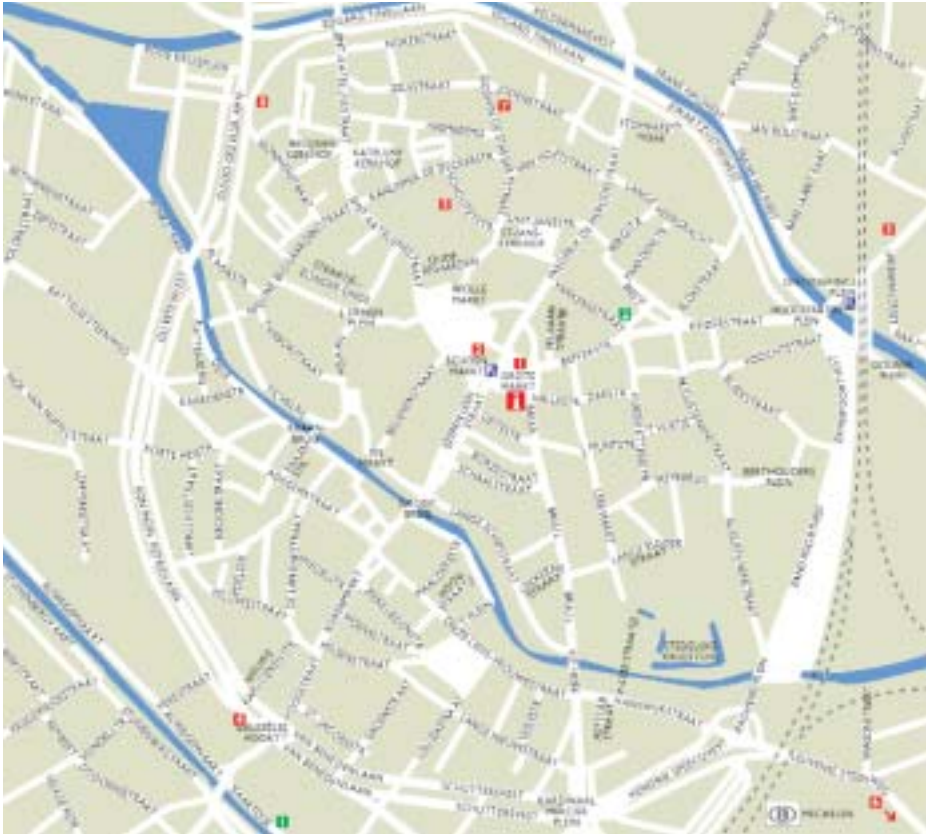
Eight churches in Mechelen's old city centre are open in the afternoon:

Saint Rumbold's Cathedral, Church of Our-Lady-Across-The-River-Dijle, Church of St. Catherine, Church of St. John, Church of the Beguines, Church of Our Lady from the Valley of the Lilies, Church of Our Lady of Hanswijk and Church of St. Peter and St. Paul.

Tourist Information Centre Tel: (0)15 29 76 55
 Tourist Information Centre open: 1 April to 30 October,
 1pm-5pm; 1 November 2002 to 31 March, noon-4pm.

St. Rumbold's Cathedral





Attractions

Toy Museum

Relive your childhood whatever your age – it's all here. A choice of floors are packed with toys of every description, from old teddy bears and board games to Barbie and the Smurfs.

21 Nekkerspoel

Tel: (0)15 55 70 75 Fax: (0)15 55 20 85

Open: everyday except Mondays, 10am-5pm.

Closed: 1 January, 24, 25 and 31 December.

Admission: Adult €5.08, Child (3-12yrs) €3.59.

Museum Brusselpoort (Brussels Gate)

The only remaining town gate in Mechelen is now the museum of the town's early history, including prehistoric times and the Gallo-Roman period. Hoogstraat

Tel: (0)15 29 40 30

Open: everyday except Mondays: Tuesday to Friday, 1pm-5pm; Saturday and Sunday, 10am-5pm.

Admission: Adult €2, Child (<12yrs) free.

Map References

Attractions

- 1 Grote Markt
- 2 St Rumbold's Cathedral
- 3 Toy Museum
- 4 Museum Brusselpoort
- 5 Royal Tapestry Manufacturer De Wit
- 6 Technopolis
- 7 Jewish Museum
- 8 Brewery Museum

Hotels

- 1 Best Western Hotel Gulden Anker
- 2 Express by Holiday Inn Mechelen

Pc Car Parking

Pb Bus/Coach Parking



In and around Mechelen

Royal Tapestry Manufacturer De Wit

One of the finest manufacturers of tapestries in the world, De Wit keeps to traditional manufacturing methods when producing new tapestries and also restores antique tapestries to their former glory.

7 Schoutetstraat

Tel: (0)15 20 29 05 Fax: (0)15 40 48 88

Open: Saturdays from 10.30am.

Admission: Adult €6, Child (12-18yrs) €2, Child (<12yrs) free.

Technopolis

This is the only activity centre for science and technology in Flanders and it has over 259 interactive exhibits. Technopolis is the place where you can land a plane yourself, cycle on a high wire bike five metres above ground and give the whole family plenty of fun and surprises.

Technologielaan

Tel: (0)15 34 20 00 Fax: (0)15 34 20 01

Open: everyday, 9.30am-5pm.

Admission: Adult €7.19, Child (3-11yrs) €4.70.

Jewish Museum of Deportation and Resistance

The museum of the Deportation and Resistance of Jews in Belgium is housed in a wing of the former Dossin of Saint Georges' Barracks, which is an historic site as well as a place of remembrance. The museum shows and tells the history of the 'Endlösung' or 'Final Solution' and how it affected Belgium and Europe.

153j Goswin de Stassartstraat

Tel: (0)15 29 06 60 Fax: (0)15 29 08 76

Open: everyday except Mondays and Saturdays; Sunday to Thursday 10am-5pm; Friday 10am-1pm.

Admission: free.



Workroom at
Manufacturer De Wit

Het Anker Brewery Museum

This traditional brewery produces Gouden Carolus, Mechelschen Bruynen and Triple Gouden Carolus – brews for the beer connoisseur. Tastings and guided tours are available by prior arrangement.

49 Guido Gezellelaan

Tel: (0)15 20 38 80 Fax: (0)15 21 21 07

(Group visits only by appointment).

Places of interest around Mechelen

Planckendael Animal Park

Situated to the south of the city, this park houses over 1,000 animals, including rare breeds and endangered species. For a real adventure, travel there by boat (from behind Mechelen's central railway station).

582 Leuvensesteenweg

Tel: (0)15 41 49 21 Fax: (0)15 42 29 35

Open: Summer 10am-6.15pm; Winter 10am-4.30pm everyday.

Admission: Adult €13, Child (3-11yrs) €8.50.



Town Hall and Statue of Opsinjoorke



Where to eat and stay

The following is a list of some of the restaurants and hotels in Mechelen. There are, of course, many more good quality establishments in this city, the local tourist office will be pleased to give you a more complete list.

Restaurants in Mechelen

D'Hoogh ♦♦♦

Honoured with one star in the French Michelin guide, D'Hoogh is especially known for its fine French cuisine.

Business Lunch €48.

19 Grote Markt

Tel: (0)15 21 75 53 Fax: (0)15 21 67 30

Folliez ♦♦♦

One of the finest restaurants in the city and a must for its excellent fish dishes and fresh seasonal cuisine.

Market menu €47, special tasting menu €52 - €65.

19 Korenmarkt

Tel: (0)15 42 03 02 Fax: (0)15 42 03 08

Het Anker ♦♦ (De Twee Palen)

This is the restaurant of the local brewery, hence the chef marries together the delights of Belgian beer with the local cuisine. Try the Mechelen cuckoo, a succulent chicken dish of the city.

Menus from €14.50.

49 Guido Gezellelaan

Tel: (0)15 20 38 80 Fax: (0)15 21 21 07

De Cirque ♦

This restaurant offers weekly suggested menus and Sunday brunches according to the seasonal fare on offer. Try out the Jazz Sunday on the 1st Sunday of every month. Enjoy the Mexican

dishes, pastas and snacks on offer.

Menus from €8.

8 Vismarkt

Tel: (0)15 20 77 80 Fax: (0)15 20 96 50

Pubs and clubs

D'Hanekeef

A traditional Flemish brown café with a lively atmosphere and a good range of beer and whisky.

8 Keizerstraat

't Klapgat

At the foot of the Cathedral, this old style pub/café has a great selection of beers to choose from, not to mention the added bonus of having a late night kitchen just in case you get peckish after sampling all those Belgian beers.

10 Wollenmarkt

Den Gouden Vis

Worth visiting just for the beautiful Art Nouveau interior.

7 Nauwstraat

Borrel Babbel

The smallest cafe in Mechelen, specialising in spirits.

2 Nieuwkerk

Hotels in Mechelen

Please refer to terms & conditions on page 6.

Best Western Hotel Gulden Anker ****

Charming 4-star hotel at walking distance from the city centre. The hotel features a cosy restaurant, bar, fitness room and sauna. Ideally located at 15 minutes from Antwerp and Brussels for a discovery tour of Flanders.

34 rooms. From €80 to €113 per room.

Menus from €21 to €49.60.

2 Brusselsesteenweg, 2800 MECHELEN

Tel: (0)15 42 25 35 Fax: (0)15 42 34 99

*children up to 2 years stay free
children up to 12 years stay at half price
no single supplement*

Express by Holiday Inn Mechelen ***

Brand new hotel with comfortable rooms, located in the city centre.

69 rooms. From €69 to €105 per room.

37c Veemarkt, 2800 MECHELEN

Tel: (0)15 44 84 20 Fax: (0)15 44 84 21

no single supplement

In and around Leuven

Leuven Tourist Office
Stadhuis, Grote Markt
3000 LEUVEN

Tel: (0)16 21 15 39 Fax: (0)16 21 15 49
E-mail: toerisme@leuven.be
www.leuven.be

From the 11th and 12th centuries, Leuven began to develop as an important trading centre of the Duchy of Brabant, and since 1995 it has been a provincial capital. Its wealth originated in the production and trade of textiles, but this fell into decline in the 14th century. Leuven is now better known for its university which was founded in 1425 and is the largest in Belgium. It is regarded as one of the greatest historical European seats of learning, boasting a fine pedigree of former students including the patronage of some of the greatest minds of our time, such as Erasmus, Mercator, Vesalius, Jansenius and Rega.

Leuven is also well known as Belgium's beer capital, mainly because it houses the headquarters of Interbrew (the brewer of Stella Artois and Leffe). There has been a brewery in the city since 1366 under the name of Den Horen (the Horn), but Stella is a relatively recent arrival, having only been introduced in 1926 as a barley beer.

Shopping

The main shopping areas are all well located around the Grand-Place. For general shops you should head for the Bondgenotenlaan, the Diestsestraat and the Brusselsestraat. Raets-Putseys (85 Bondgenotenlaan) sells luxury chocolates, Serena (4 Pensstraat) is a must for fine lace and Vinifrance (22/24 Ladeuzeplein) offers a wide range of Leuven fruit gins. Also, admire the wide array of fine antiques on display at the lively market on Mathieu de Layensplein and Mechelsestraat, every Saturday from 9am-6pm



City Hall



Places of interest

The Oude Markt

More than sixty cafes and bars surround the Oude Markt, which makes for a very lively atmosphere, especially in the summer when the tables spill out onto the cobbled square.

Town Hall (Stadhuis)

A marvel of medieval architecture dating back to 1439, the exterior has been extensively and elaborately carved. Looking at the hundreds of small carvings and 300 statues decorating the exterior, it comes as no surprise that it took thirty years to complete.

Grote Markt
Tel: (0)16 21 15 39

Saint Peter's Church

The first Saint Peter's Church is presumed to have been founded in 986 and the site is the oldest of the city's churches. The current one, founded in 1425, is a fine example of late-gothic architecture and houses the Treasury of Saint Peter, where a number of religious artworks are on permanent display, including the famous (15th century) painting the 'Last Supper' by Dirk Bouts.

Grote Markt
Tel: (0)16 22 69 06

Great Beguinage (Begijnhof)

Founded in the 13th century just outside the town wall, the Begijnhof was inhabited by 'Begijns' (secular religious women who unlike nuns did not take perpetual vows and who were allowed to keep their own property and to support themselves).

This 'town within a city' has been restored to its former glory and in 2000 was crowned a UNESCO cultural world heritage site. Now used as university accommodation and with no cars in the grounds, the Begijnhof still remains an ideal place to come to reflect and enjoy a tranquil atmosphere.

Schapenstraat



University Library

Destroyed at the start of World War I, the University Library was re-built in 1921 in the Flemish renaissance style. Containing over three million books, this library is a suitable consort for the eminent University.

21 Monseigneur Ladeuzeplein

Tel: (0)16 32 46 60

University Colleges

As with many ancient university towns, the university buildings are spread throughout Leuven. Take time and pleasure to explore the colleges in the Naamsestraat area that reflect the glorious past of the university.

Abbeys

Park Abbey and Keizersberg Abbey are two of the four abbeys in Leuven and these two are still inhabited by monks today (both can be visited by appointment).

Park Abbey: 7 Abdijdreef (Heverlee),

Tel: (0)16 40 63 29

Map References

Attractions

- 1 Oude Markt
- 2 Town Hall
- 3 St Peter's Church
- 4 Great Beguinage
- 5 University Library
- 6 Stella Artois Interbrew Brewery
- 7 Domus
- 8 Municipal Museum Vander Kelen-Mertens
- 9 Botanical Garden

Hotels

- 1 Holiday Inn Garden Court Leuven
- 2 Ibis Leuven Centrum
- 3 La Royale

P_c Car Parking

P_B Bus/Coach Parking

Keizersberg Abbey: 202 Mechelsestraat,
Tel: (0)16 22 41 74

The other two abbeys are Vlierbeek Abbey:
Abdijlaan (Kessel-lo) and Saint-Gertrude's Abbey:
Halfmaartstraat

In and around Leuven



Detail of the City Hall

Attractions

The Interbrew Brewery

Dating back to before 1366, by the 16th century this brewery was the most important enterprise of the city and today is one of the largest brewers in the world. The brewery is open to visitors by prior arrangement.

94-96 Vaartstraat

Tel: (0)16 24 74 61

(visits for groups only and on request)

Domus

The domestic brewery Domus is unique in Belgium, since it directly links a pipeline to the taps in the tavern where locals and visitors can chat over a beer or two. Try the Nostra Domus & the Leuwendige Witte, available all year round, or one of many seasonal beers on offer in this rustic pub.

8 Tiensestraat

Tel: (0)16 20 14 49

(visit for groups only and on request)

Municipal Museum Vander Kelen-Mertens

This museum houses temporary art exhibitions and a permanent reconstruction of rooms in different styles with a collection of furniture, paintings, sculptures and tin. In the garden, you can visit the excavated remains of the Savoye college student residence.

6 Savoyestraat

Tel: (0)16 22 69 06

Open: everyday except Mondays; Tuesday to Saturday, 10am-5pm; Sunday and Public Holidays, 2pm-5pm.

Admission: (Combination ticket with the treasury of St. Peter's) Adult €5, Child (12-18yrs) €2.50, Child (<12yrs) free.

Botanical Garden

Dating from 1738, the oldest botanical garden of Belgium houses an extensive collection of medicinal herbs, herbaceous plants, water and tank plants, flowers, trees, shrubs and bushes within a surface of approximately 2.3 hectares. The greenhouse complex displays a variety of tropical and subtropical plants.

30 Kapucijnenvoer

Tel: (0)16 29 44 88

Open: 1 May to 30 September, 8am-8pm; 1 October to 3 April, 8am-5pm. Sundays and Public Holidays from 9am.
Closed: 1 January and 25 December.

Admission: free.

Places of interest around Leuven

Leuven is the provincial capital of Vlaams-Brabant, an area of 106 km² inhabited by over a million people. To the east, the Hageland region beckons with its vast range of hills with vineyards growing on the southern slopes, while to the west you will find the Green Belt around Brussels, a stringing together of parks, gardens, woods, farmland and meadows, strewn with small, charming villages full of character. For cyclists, the Dijleland network of cycle routes represents 300 km of cycling, which can be explored according to your own preferences and cycling ability.

Where to eat and stay

The following is a list of some of the restaurants and hotels in Leuven. There are, of course, many more good quality establishments in this city, the local tourist office will be pleased to give you a more complete list.

Restaurants in Leuven

Arenberg ♦♦♦

Quality restaurant serving genuine high-standard all-in meals. Ideal, peaceful location with an enclosed garden with a terrace, close to Leuven centre.

Menus from €40 and €50.

46 Kapeldreef (Heverlee)

Tel: (0)16 22 47 75 Fax: (0)16 29 40 64

Sire Pynnock ♦♦♦

Who says excellent food is an indulgence? Enjoy excellent cooking without any guilt - all the ingredients are fresh and vegetables are a speciality.

3 courses from €36.

Gastronomic menu from €64.

10 Hogeschoolplein

Tel: (0)16 20 25 32 Fax: (0)16 20 11 26



Beluga Fish Restaurant ♦♦

A small and intimate restaurant with only seven tables where you can enjoy all kinds of delicious foods, fresh from the sea.

Menu from €44.50.

12 Krakenstraat

Tel: (0)16 23 43 93 Fax: (0)16 20 51 76

Het Land Aan De Overkant ♦♦

Trendy restaurant with Mediterranean cooking, situated on the Leuven ring, 20 minutes by foot from the city centre.

3 courses from €31.50.

Gastronomic menu from €49.50.

89 Leon Schreursvest

Tel: (0)16 22 61 81 Fax: (0)16 22 59 69

De Valck ♦♦

Enjoy one of the most famous of all Belgian dishes – mussels cooked every which way.

Dish of the day from €10, menus from €24.

(weekend suggestion with fish)

10 Tiensestraat

Tel/Fax: (0)16 22 13 97

Klein Tafelrond ♦

Sample a speciality of the Brabant area, 'côte à l'os', a succulent meat dish.

Menus during the week (dish of the day) from €9.50, weekends from €18.

4 Grote Markt

Tel/Fax: (0)16 22 04 52

De Wiering ♦

Romantic 17th century café-restaurant with a view on the river Dijle. The wooden floors creak and the doors stick, but the atmosphere is pleasantly quaint with an open kitchen and dripping candles. You can taste 70 types of beer.

Menus from €10.

2 Wieringstraat

Tel: (0)16 29 15 45 Fax: (0)16 29 54 83

Pubs and clubs

De Blauwe Schuit

Re-live the glamour of the movies in this Humphrey Bogart and Casablanca theme bar (also snacks).

16 Vismarkt

Taverne Wentelsteen

An historical tavern in the heart of the city centre, formerly part of the Trilingue College for humanism. Serving local beers such as Wentelkriek and Keizersberg beer.

6D Busleidengang (Vismarkt)

Metropole

Multicultural pub, famous for its spaghetti with a central location.

46 Oude Markt

'STUK'

Situated in a renovated former chemistry lab this is the pub of the new centre for theatre, dance and music (STUK) of the Leuven student community. Delicious lunches of international and original cooking are also served here.

96 Naamsestraat

Gambrimus

Grand Café in impressive 19th century setting with oil paintings on the wall and leather benches.

13 Grote Markt

Hotels in Leuven

Please refer to terms & conditions on page 6.

Holiday Inn Garden Court Leuven ***

Situated in the heart of Leuven this hotel suits both leisure and business tourists. All rooms have modern conveniences of the Holiday-Inn standard and there are meeting facilities available.

101 rooms. From €120 to €225 per room.

Menus from €15 to €35.

7 Alfons Smetsplein

3000 LEUVEN

Tel: (0)16 31 76 00 Fax: (0)16 31 76 01

children up to 12 years stay free
no single supplement
3rd night free in July and August 2003

Ibis Leuven Centrum **

Situated in the historical city centre.

72 rooms. From €69 to €86 per room.

52 Brusselsestraat

3000 LEUVEN

Tel: (0)16 29 31 11 Fax: (0)16 23 87 92

3rd night free from 1 December 2003 to 28 February 2004
1 child up to 11 years stays free

La Royale *

This hotel dates back to 1923 and is ideally located for your discovery of Leuven and Flanders. 10 minutes from the city centre it is easy to reach by car. The hotel allows bicycles to be conveniently stored.

36 rooms. From €69 to €82 per room.

6 Martelarenplein

3000 LEUVEN

Tel: (0)16 22 12 52 Fax: (0)16 29 52 52

children up to 12 years stay free

Calendar of Events

Events are annual unless otherwise indicated.

Here is a small selection of events which will take place in Flanders from April 2003 until April 2004. For a complete list of what's on in each town, please contact the local tourist office (contact information given at the beginning of each section), or visit our UK web site, www.visitflanders.co.uk or Tel: 020 7867 0311. You can also write to Tourism Flanders-Brussels, 31 Pepper Street, London E14 9RW

Key: (C) Church, (E) Exhibition, (F) Festival, (G) Garden, (H) Historic, (M) Music, (P) Procession, (S) Sport, (T) Theatre, (W) Walks.

April and May 2003 (G)

Conservatories of Laken, Brussels, Royal Palace, Corner of Kon. Parklaan and Van Praetlaan, Laken
The conservatories of the Royal Family are opened to the public. €2 / Children under 18 free
Tel: (0)2 551 20 20

April to September 2003 (F)

Beaufort 2003, Coastal towns of Flanders
Art festival.
Contact local tourist offices
www.beaufort2003.be

22 April to 4 May 2003 (F)

International Film Festival, Brussels, Flagey building, Flageyplein, Elsene
Tel: (0)2 227 39 80
www.brussselfestival.be

2 to 24 May 2003 (F)

Arts Festival (Kunsten FESTIVALdesArts), Brussels, Various Locations
Theatre, music, dance, film, multimedia etc.
Tel: (0)2 219 07 07
www.kunstenfestivaldesarts.be

11 May 2003 (F)

Cat Festival and Cats Parade, Ypres
Every 3 years
Tel: (0)57 22 85 84
www.ieper.be/kattenstoet2003/eng/

22 to 25 May 2003 (F)

Ostend at Anchor, Ostend, Montgomery and Mercatorok plus various locations in the city
Display of the finest and oldest Belgian and foreign ships, with live performances and exhibitions.
Tel: (0)59 70 11 99 Fax: (0)59 70 34 77
www.oostendevoorAnker.be

23 to 25 May 2003 (M)

Jazz Marathon, Brussels, various squares and cafes
125 live concerts with more than 450 musicians
3 days of open air jazz concerts all over Brussels.
€15, €12.50 pre-sale, valid for 2 days.
Tel: (0)2 456 04 82
www.brusselsjazzmarathon.be

25 May 2003 (P) (always on Sunday before Ascension day)

Hanswijk Procession, Mechelen, city centre
This procession honours Our Lady of Hanswijk, based on a legend from 1271, involving 2,000 actors and dancers. €3,72 - €6,20
Tel: (0)15 29 76 56 or (0)15 42 01 40

29 May 2003 (P)

Procession of the Holy Blood, Bruges, city centre
This year's procession portrays scenes from the Bible, and the third section describes how the Holy Blood found its way to Bruges. €3,72-€9,92
Tel: (0)50 44 86 86
www.brugge.be

June to August 2003 (F)

International Cartoon Festival, Cultural Centre Scharpoord, Meerlaan 32, Knokke
Tel: (0)50 63 04 30

June to October 2003 (F)

International Festival of Flanders, various cities in Flanders
This Festival is one of Europe's 5 major concert festivals. The medieval settings add special appeal to the concerts by internationally qualified performers.
Tel: (0)9 243 94 94 Fax: (0)9 243 94 90
www.festival-van-vlaanderen.be

13 to 15 June 2003 (G)

Festival of Roses and Collections at Hex Castle, Heers, Hex Castle (Kasteel Van Hex)
English garden with a unique collection of old-fashioned and botanical roses. Admission €7.50. Children under 12 years free. Dogs not admitted
Tel: (0)12 74 73 41 Fax: (0)12 74 49 87
E-mail: gardens@hex.be www.hex.be

Late June to Mid August (F)

Sand Sculpture Festival, Zeebrugge beach
€4.50 adults, €2 (6 to 11 years)
Tel: (0)50 55 09 05
www.zandsculptuur.com

Every Friday of July 2003 (M)

Beleuvenissen, Leuven, city centre
Open air festival featuring a different musical genre every day: classical, jazz, tropical and folk. Free.
Tel: (0)16 21 15 39
www.leuven.be

3 July 2003 (P)

Ommegang Procession, Brussels, Grand-Place
A grand historical procession in honour of Charles V and his son Philip, Crown Prince of Spain, with authentic costumes, apparel and decoration.
Tel: (0)2 512 19 61
www.ommegang-brussels.be

5 to 6 July 2003 (M)

Seat Beach Festival, Ostend, Wellington Race Track
A mix of internationally renowned artists strut their stuff on 4 stages during 2 days.
Tel: (0)900 00 565
www.seatbeachrock.be

6 July 2003 (Ma) also 03 Aug & 28 Sept

Sand Festival, Bruges, 't Zand
Flanders' largest bric-a-brac, antiques and second-hand market.
Tel: (0)50 44 86 86 (Bruges Tourist Office)
www.brugge.be

11 to 13 July 2003 (M)

Cactus Festival, Bruges, Minnewaterpark
Open air music festival in the Minnewaterpark.
Tel: (0)50 33 20 14
www.cactusmusic.be

Free Prize Draw

WIN a Weekend Break for 2 at the Sofitel Gent Belfort Hotel****

Hoogport 63, 9000 Ghent

Tel: (0)9 233 33 31 Fax: (0)9 233 11 02

including return travel with Eurotunnel



Simply fill out the questionnaire below and post it to:
Tourism Flanders-Brussels, 31 Pepper St, LONDON E14 9RW
Tel: 020 7867 0311 Fax: 020 7458 0045

Date: _____ Title: _____ Initial: _____ Surname: _____

Daytime tel: _____ E-mail: _____

Address 1: _____ Address 2: _____

Address 3: _____ Postal town: _____

Postcode: _____ Country: _____

What is your age?: under 16 16-25 26-35 36-45 46-55 56-65 66-75 76 or over

1) Which of the following best describes your family situation?

Never had any children Children under 11 living at home Children 12-16 living at home

Children over 17 living at home Children have all left home

2) Do these children normally travel with you on holiday? Yes No

3) How many times did you travel with Eurotunnel in the past 12 months?

Day Trip 0 1 2 3-5 6+

Short Stay (5 nights or less) 0 1 2 3-5 6+

Long Stay (more than 5 nights) 0 1 2 3-5 6+

4) For each type of trip, do you think the number of times you travel with Eurotunnel in the next 12 months is likely to:

Day Trip Increase Decrease Stay about the same

Short Stay

Long Stay

5) How many times have you been to the Flanders region with Eurotunnel in the past 12 months?

0 1 2 3-5 6+

6) Who did you travel with on your last trip with Eurotunnel?

By self With partner With group of friends With family (children)

With Family (older members) Coach trip Other

PLEASE SEE OVER

PRIZE DRAW RULES **1.** Two night's bed and breakfast accommodation for two people at the Ghent Sofitel, sharing a double or twin room. Return crossings by car on Eurotunnel. **2.** Entrants must be aged 18 years or over. **3.** Employees of Eurotunnel, the Tourist Offices of Flanders-Brussels, their advertising and promotion agencies and members of their immediate families are not eligible to participate. **4.** The draw will be made by an independent person on 19 December 2003. **5.** The winner will be notified in writing by 31 January 2004. The name of the prize winner will be made available on request by post after 15 February 2004. **6.** Responsibility cannot be accepted for lost or mislaid entries. Damaged or defaced entries will be disqualified. **7.** The prize is not transferable or negotiable, cannot be exchanged for cash and is subject to availability. **8.** Winners may be required to take part in any publicity accompanying or resulting from this promotion. **9.** The prize can be taken on any weekend (Friday, Saturday or Sunday nights) until 30 June 2004 excluding 28 and 29 May. Subject to availability. **10.** Promoter for travel: Eurotunnel Destinations Marketing, PO Box 2000, Folkestone, Kent CT18 8XY; promoter for accommodation; Tourism Flanders-Brussels, 31 Pepper Street, London E14 9RW.

7) What are your chief interests/reasons for visiting the region? (tick all that apply)

Eating out Shopping Museums/churches/monuments Exploring by car
 Sport activities Walking Leisure parks/attractions

8) How did you obtain your guide?

Eurotunnel terminal On board the shuttle Eurotunnel web site
 Eurotunnel call centre Direct mail at home Tourist office
 Other (please state) _____

9) Have you used this guide to:

Plan a trip Yes No
 Visit somewhere new Yes No
 Discover more about the region Yes No
 Just for Reference Yes No

10) Please rate the usefulness of this guide

(1 = not very useful, to 10 = extremely useful)

The following brochure is available on request from Tourism Flanders-Brussels. If you would like to receive a copy, please tick the box. 'Cities For All Seasons'

We would be pleased to hear your comments on the content of this guide. Please use the space below:

Eurotunnel/Tourism Flanders-Brussels would like to retain your data in order to keep you up to date with Eurotunnel/Tourism Flanders-Brussels offers and services and certain third party products that we feel may be of interest to you. We would also like to be able to contact you for your views on our products and services.

If you object to Eurotunnel retaining your data, please tick here

If you object to Tourism Flanders-Brussels retaining your data, please tick here

11 to 18 July 2003 (F)

World festival of Folklore, Schoten, municipal park
Folk dancing troupes from around the world in the castle of Schoten.
Tel: (0)3 658 10 58
www.wereldfestivalschoten.be

19 July 2003 (P)

Giants' Procession and Festivities, Wenduine, town centre
Fifty giants from France, Belgium and the Netherlands wander around Wenduine.
Tel: (0)59 24 21 24

19 to 28 July 2003 (F)

Ghent Festival and International Puppetbuskersfestival, Ghent, city centre
Ten-day festivities in the old city with musical and theatrical performances and street entertainment.
Tel: (0)9 239 42 60 or (0)9 269 46 00 Fax: (0)9 269 46 59
www.gentsefeesten.be

27 to 28 July 2003 (F)

Meetjesland Balloon Meeting, Eeklo, Burg. L. Pussemierstraat
Biggest balloon meeting with international competition. €120 for a balloon ride
Tel: (0)50 71 29 55

August 2003 (F)

International fireworks festival, Knokke-Heist, Duinbergen beach
Perfectly synchronised fireworks and music.
Tel: (0)50 63 03 80

13 to 15 August 2003 (M)

MarktRock Leuven, Leuven, town centre
A grand event with student like ambiance with music to suit all tastes. 21st edition.
Tel: (0)16 29 08 23
www.marktrock.be

15 August 2003 (Ma)

Rubens Market, Grote Markt and surrounding areas, Antwerp
Market where stallholders dress in 16th century clothes.
Tel: (0)32 70 17 11 or (0)32 03 95 17

Mid August 2003 (M)

Jazz Festival, Bruges
A three-day jazz festival with European Jazz Musicians.
Tel: (0)50 44 86 86 Fax: (0)50 44 86 00

October 2003 – August 2004 (E)

Neanderthal Man in Europe, Tongeren Gallo-Romeins Museum, Kienenstraat 15
Panoramic exhibition of the earliest prehistoric culture in Europe.
Tel: (0)12 67 03 30
www.limburg.be/gallo

7 to 18 October 2003 (F)

Flanders International Film Festival, Ghent Decascoop, Studiocoop, Sphinx
150 Feature and 80 short films are shown in the company of directors, actors, and 70,000 visitors.
Tel: (0)9 242 80 60 Fax: (0)9 221 90 74
E-mail: info@filmfestival.be www.filmfestival.be

18 to 19 October 2003 (F)

Hasselt Jenever Festival, Hasselt National Jenever Museum
Tel: (0)11 23 95 40
www.hasselt.be

End of Oct to end of Nov 2003 (annual) (M)

Night of the Proms, Antwerp, Sportpaleis, Schijnpoortweg 113
An evening of classical, pop and rock music.

11 November 2003 (H)

Armistice Day Commemorations, various cities
Contact City Tourist Offices

5 December 2003 to 4 January 2004 (Ma)

Brussels Christmas and Gastronomic Market
Tel: (0)2 548 04 71

5 to 7 December 2003 (Ma)

Antwerp Christmas Market, Antwerp
Tel: (0)3 232 01 03
www.visitantwerpen.be

6 December 2003 to 4 January 2004 (Ma)

Kiosk-on-ice, Ostend, town centre
Ice rink and Christmas Market.
Tel: (0)59 70 11 99
www.oostende.be

11 to 15 December 2003 (Ma)

Leuven Christmas Market, Leuven, Hooverplein and Ladeuzeplein
Tel: (0)16 23 71 14

Mid December 2003 to beginning of January 2004 (Ma)

Christmas Market and Ice Rink Bruges, Bruges
Tel: (0)50 44 86 86 (Bruges Tourist Office)
www.brugge.be

Mid December 2003 to beginning of January 2004 (F)

Snow and Ice Sculpture festival, Bruges
Tel: (0)50 44 86 86 (Bruges Tourist Office)
www.brugge.be

17 December to 4 January 2004 (S)

Antwerp skates, Antwerp, Grote Markt, Ice rink.
Tel: (0)3 232 01 03
www.visitantwerpen.be

23 December 2003 to 5 January 2004 (F)

Zomer van Antwerpen in Winter, Antwerp
A Winter Festival with a 'Summer of Antwerp' Flavour, featuring music and cultural events.
Tel: (0)32 03 95 17

This guide has been produced and jointly funded by Eurotunnel and Tourism Flanders-Brussels. The information contained within this guide has been carefully selected for the benefit to the user. All information regarding dates, times, prices, suggested names of shops, cafes/pubs/clubs, restaurants and events highlighted are correct at the time of first print (April 2002) but are subject to change. All information relating to hotels are correct at time of second print (March 2003). The partnership of Eurotunnel and Tourism Flanders-Brussels cannot be held responsible for any changes to prices or opening hours. We advise people to check details prior to their travel.

Become a Friend of Flanders

by either logging on to our website:

www.visitflanders.co.uk



or by filling in the coupon below, or a photocopy of it and posting it to:

Tourism Flanders-Brussels
31 Pepper Street,
London E14 9RW

For further information on Flanders contact:
 Telephone: 020 7867 0311
 Facsimile: 020 7458 0045
 E-mail: office@visitflanders.co.uk

By filling out this coupon you will also receive a free information pack containing:

- Cities for All Seasons brochure
- Road Map of Belgium
- plus regular issues of 'Friends of Flanders'



Name

Address

Email

Have you ever visited Flanders before?

Never . . . Last 12 months . . . Last 2 years

If Yes, where? Antwerp . . Bruges . . Brussels . . Leuven

Ghent . . . Mechelen . Coast . . . Battlefields

Other

How many short break holidays do you take each year?

0 1 2 3+

How do you book your short break? . . . Travel Agent

Direct with a Tour Operator . . . Direct with Hotel/Transport

Are you: . . . Single . . . Married

Do you have children and if so how many?

0 1 2 3+

Your age: . . . 18-25 . . . 26-35 . . . 36-45

46-55 . . . 55+

Your occupation:

If you do not wish to receive information from Tourism Flanders-Brussels, please tick this box: